

Planning Unit 085015

Forest Harvest Plan

1. Introduction

This Forest Harvest Plan (FHP) for PU 085015 includes maps and reports that clearly show and document the planned harvest area boundaries, roads and water crossings within the planning unit.

This plan is being submitted for appraisal for a 5-year Forest Harvest Plan FHP approval under the 2014-15 Alberta-Pacific Forest Industries Inc. (Alberta-Pacific) Annual Operating Plan (AOP).

2. Planning Unit Specific Comments

Planning Unit 085015 is located northwest of Wabasca. Tepee lake lies to the northeast of the planning unit.

The following blocks have been previously submitted and approved on July 11, 2013 for early entry with the condition that the variance be completed at the FHP stage.

08501503261

08501503841

08501511421

Planning Unit 085015 was brought into 2014-15 timber year to aid in the construction of the Trout River Road. The majority of this planning unit was not chosen when Alberta-Pacific selected the 2006 Spatial Harvest Sequence (SHS). Township (Twp) 84-02-5 is the only Twp that contained SHS, thus the other three Twps do not have SHS stands and the blocks have been planned using forest inventory stands. These added stands have been reported as "Addition ha." in the variance tables in Sections 7 and 9.

The planning unit is located in Forest Management Unit (FMU) S11. Alberta-Pacific has rights to D and D(C) as deciduous landbase.

The coniferous design (coniferous SHS) is shown for landbase integration purposes. Detailed coniferous block and road design, variances to the coniferous SHS and coniferous profile reporting will be completed by the coniferous operator during their planning process. The affected coniferous operator has reviewed and agreed to the deciduous design.

Integration

This FHP is in FMU S11 and has been provided for review to the S11 Logging Company Ltd.

Alberta-Pacific has received their agreement for this plan.

Watershed

Hospital creek forms the west planning unit boundary and has been surveyed as a fish bearing creek and will be buffered accordingly.

The remaining unsurveyed creeks have been buffered and crossed as though they were fish bearing.

Stand Structure

An average of 5% of the merchantable volume will be left in stand structure over the landscape. The structure will be left as layout patches, and as single trees and small clumps of timber at the operators' discretion.

Stand structure has been planned (delineated) in the larger blocks to create some larger (> 1 ha) residual areas. These areas are identified as Retention Areas (RAs) within the lists and on the maps. These blocks have a 9 at the end of the block number.

Debris Management

All of the blocks in this unit are outside FireSmart Community Zones as identified by Alberta Environment and Sustainable Resource Development (ESRD). One or more of following debris management strategies apply for blocks within this planning unit:

- Methods described in the Forest and Prairie Protection Act and Regulations, and/or
- Thinly spread slash throughout the block, and/or
- Stump side processing.

The retention of debris piles may also be utilized in addition to the above strategies, as per Forest Protection Directive 2007-02.

The deciduous utilization standard will be 15/10. The coniferous utilization standard will be 15/11.

Design Comments

During the layout phase of this operation, Alberta-Pacific looked for signs of insect or disease infestations. No significant amounts were reported.

3. Block Information

The following table summarizes the volumes within S11 Logging and Alberta-Pacific's FHP blocks.

Landbase Volume Summary

Company	Area (ha)	Decid (m3)	Conif (m3)	Inc Conif (m3)	Total (m3)
S11 Logging	1,762	88,981	235,321	12	324,314
Alberta-Pacific	2,215	349,752	0	22,861	372,613

The blocks that were previously submitted and approved show as italicized in the table below.

Alberta-Pacific Deciduous First Entry Block Listing

(Values Affected by Rounding)

Source Id	Harvest Season	Conif Charge	Detail Plan	Area (ha)	Decid (m3)	Conif (m3)	Inc Conif (m3)	Total (m3)
08401527221	F	INC		11	1,495	0	198	1,693
08401528861	F	INC		175	26,022	0	1,259	27,281
08401536821	NF	INC		2	282	0	9	291
08402519531	NF	INC		9	1,684	0	97	1,781
08402519761	NF	INC		9	1,800	0	450	2,250
08402528271	NF	INC		34	6,569	0	441	7,010
08402529381	NF	INC	U	24	4,955	0	610	5,565
08402529841	NF	INC	U	13	2,546	0	142	2,688
08402530861	NF	INC		26	6,262	0	588	6,850
08402531741	NF	INC		11	2,763	0	307	3,070
08402532651	NF	INC		16	3,722	0	437	4,159
08402532861	NF	INC	U	19	2,352	0	88	2,440
08402533321	NF	INC	U	4	826	0	95	921
08402533541	T	INC	U	38	6,737	0	531	7,268
08402533671	NF	INC	U	53	6,498	0	307	6,805
08402534561	F	INC	U	122	16,798	0	522	17,320
08402535471	F	INC	U	41	6,976	0	252	7,228
08402536581	F	INC		5	879	0	132	1,011
08501502781	NF	INC		3	190	0	43	233
<i>08501503261</i>	<i>NF</i>	<i>INC</i>		<i>105</i>	<i>22,930</i>	<i>0</i>	<i>813</i>	<i>23,743</i>
<i>08501503841</i>	<i>NF</i>	<i>INC</i>		<i>36</i>	<i>3,777</i>	<i>0</i>	<i>291</i>	<i>4,068</i>
08501505461	NF	INC	U	169	23,059	0	1,591	24,650
08501506831	NF	INC	U	20	2,710	0	121	2,831

**Alberta-Pacific Deciduous First Entry Block Listing
(Cont.)**

(Values Affected by Rounding)

Source Id	Harvest Season	Conif Charge	Detail Plan	Area (ha)	Decid (m3)	Conif (m3)	Inc Conif (m3)	Total (m3)
08501508791	F	INC		4	718	0	22	740
08501509461	NF	INC		38	5,321	0	249	5,570
08501509571	NF	INC		139	23,922	0	796	24,718
<i>08501511421</i>	<i>NF</i>	<i>INC</i>		<i>107</i>	<i>12,415</i>	<i>0</i>	<i>890</i>	<i>13,305</i>
08501511571	NF	INC		1	120	0	4	124
08501511731	NF	INC		70	11,717	0	365	12,082
08501514271	F	INC		23	3,908	0	182	4,090
08501514461	F	INC		1	76	0	2	78
08501515261	F	INC		12	2,045	0	75	2,120
08501516321	NF	INC		12	956	0	40	996
08501516371	NF	INC		10	2,085	0	544	2,629
08501516591	NF	INC		18	4,676	0	645	5,321
08501517341	NF	INC		124	21,734	0	952	22,686
08501518281	F	INC		3	396	0	124	520
08501518451	F	INC		7	1,533	0	219	1,752
08501520511	NF	INC	U	166	25,459	0	1,163	26,622
08501521721	T	INC		6	1,086	0	78	1,164
08501521831	T	INC		4	492	0	133	625
08502501341	NF	INC		3	570	0	72	642
08502501581	NF	INC		9	1,305	0	85	1,390
08502502341	NF	INC		51	10,615	0	648	11,263
08502502571	NF	INC		114	20,079	0	1,260	21,339
08502502721	F	INC		55	7,673	0	1,019	8,692
08502503731	NF	INC		26	4,706	0	414	5,120
08502503761	NF	INC		17	2,782	0	313	3,095
08502503811	NF	INC		2	343	0	50	393
08502504661	F	INC		5	627	0	97	724
08502504741	T	INC	U	74	9,825	0	765	10,590
08502504851	T	INC		2	210	0	32	242
08502505621	F	INC		31	2,906	0	664	3,570
08502510491	F	INC	U	22	2,801	0	323	3,124
08502511331	NF	INC		11	1,505	0	208	1,713
08502511411	NF	INC		14	2,097	0	233	2,330
08502511881	F	INC	U	27	3,268	0	298	3,566
08502512261	NF	INC		53	7,497	0	527	8,024
08502512361	F	INC		2	309	0	10	319
08502512881	F	INC		1	143	0	36	179
Total				2,215	349,752	0	22,861	372,613

Retention Area Listing
(Values Affected by Rounding)

Block Id	Harvest Season	Status	Area (ha)	Decid (m3)	Conif (m3)	Inc Conif (m3)	Total (m3)
28779			4	676	7	14	697
34789			6	874	0	27	901
34869			5	747	0	23	770
17639			4	796	8	16	820
02649			34	5,411	0	550	5,961
Total			52	8,504	15	630	9,149

4. Access and Road Information

The first portions of the Trout River Road were constructed over the 2012-13 and 2013-14 winter and will be utilized for the planning unit access.

Landuse agreements will be in place prior to use of any third party dispositions being used.

Planning Unit Temporary Road Information

Existing access has been utilized where possible to minimize the clearing of new Right of Way (RoW).

New access and channelled watercourse crossings will be reclaimed in order to restrict access. All terrain vehicle (ATV) access may be left to facilitate silviculture activities.

New access and channelled watercourse crossings will be reclaimed as per Section 11.3.4 of the Operating Ground Rules (OGRs). Road reclamation and abandonment details are listed in the AOP when the blocks and roads are scheduled.

Main Access and Crossings

Road No.	Class	Length (Km)	Construction Season	Crossing Location	Field Call	Navigability
01341	4S	0.11	Non-Frozen			
01581	4S	0.53	Non-Frozen			
02341	4S	1.76	Non-Frozen			
02571	4S	3.94	Non-Frozen	0146	E	U
				1192	E	U
02721	4W	2.03	Frozen	3539		
<i>03261</i>	<i>4S</i>	<i>0.06</i>	<i>Non-Frozen</i>			
03731	4S	0.02	Non-Frozen			
03761	4S	0.93	Non-Frozen			
03811	4S	0.05	Non-Frozen			
04661	4W	0.75	Frozen			
04741	4S	2.34	Non-Frozen	0341	SP	U
04851	4S	0.14	Non-Frozen			
05461	4S	3.94	Non-Frozen	0548	E	U
				0922	SP	U
05621	4W	2.52	Frozen			
06831	4S	0.02	Non-Frozen	0686		
08791	4W	0.31	Frozen	0868	E	U
09461	4S	0.72	Non-Frozen			
09571	4S	0.74	Non-Frozen	0968	E	U
10491	4W	2.25	Frozen			
<i>11421</i>	<i>4S</i>	<i>0.67</i>	<i>Non-Frozen</i>			
11881	4W	0.56	Frozen			
12261	4S	0.97	Non-Frozen	1184	E	U
				1224	E	U

Main Access and Crossings

Road No.	Class	Length (Km)	Construction Season	Crossing Location	Field Call	Navigability
12361	4W	0.83	Frozen			
12881	4W	1.22	Frozen			
14271	4W	0.77	Frozen	1448	I	U
14461	4W	0.78	Frozen			
15261	4W	1.32	Frozen			
16321	4S	0.32	Non-Frozen			
16371	4S	0.73	Non-Frozen			
16591	4S	0.02	Non-Frozen			
17341	4S	2.94	Non-Frozen	1713		
18281	4W	0.42	Frozen			
18451	4W	1.37	Frozen			
19531	4S	0.36	Non-Frozen			
19761	4S	2.10	Non-Frozen			
20511	4S	5.49	Non-Frozen			
21721	4S	0.49	Non-Frozen			
21831	4S	0.11	Non-Frozen			
27221	4W	0.11	Frozen			
28271	4S	0.21	Non-Frozen			
28861	4W	4.23	Frozen			
29381	4S	0.34	Non-Frozen			
29841	4S	0.75	Non-Frozen	2968	E	U
30861	4S	0.72	Non-Frozen			
31741	4S	0.66	Non-Frozen	3192	E	U
32651	4S	1.20	Non-Frozen			
32861	4S	0.40	Non-Frozen			
33321	4S	0.07	Non-Frozen			
33541	4S	0.05	Non-Frozen			
33671	4S	1.39	Non-Frozen			
34561	4W	3.58	Frozen	3445	E	U
				3484	E	U
35471	4W	1.97	Frozen			
36581	4W	2.59	Frozen	0161	E	U
				0171	I	U
				0181	I	U
36821	4S	0.01	Non-Frozen			
Total Class 4W:		27.61				
Total Class 4S:		35.30				
Total Class 4P:		0.00				

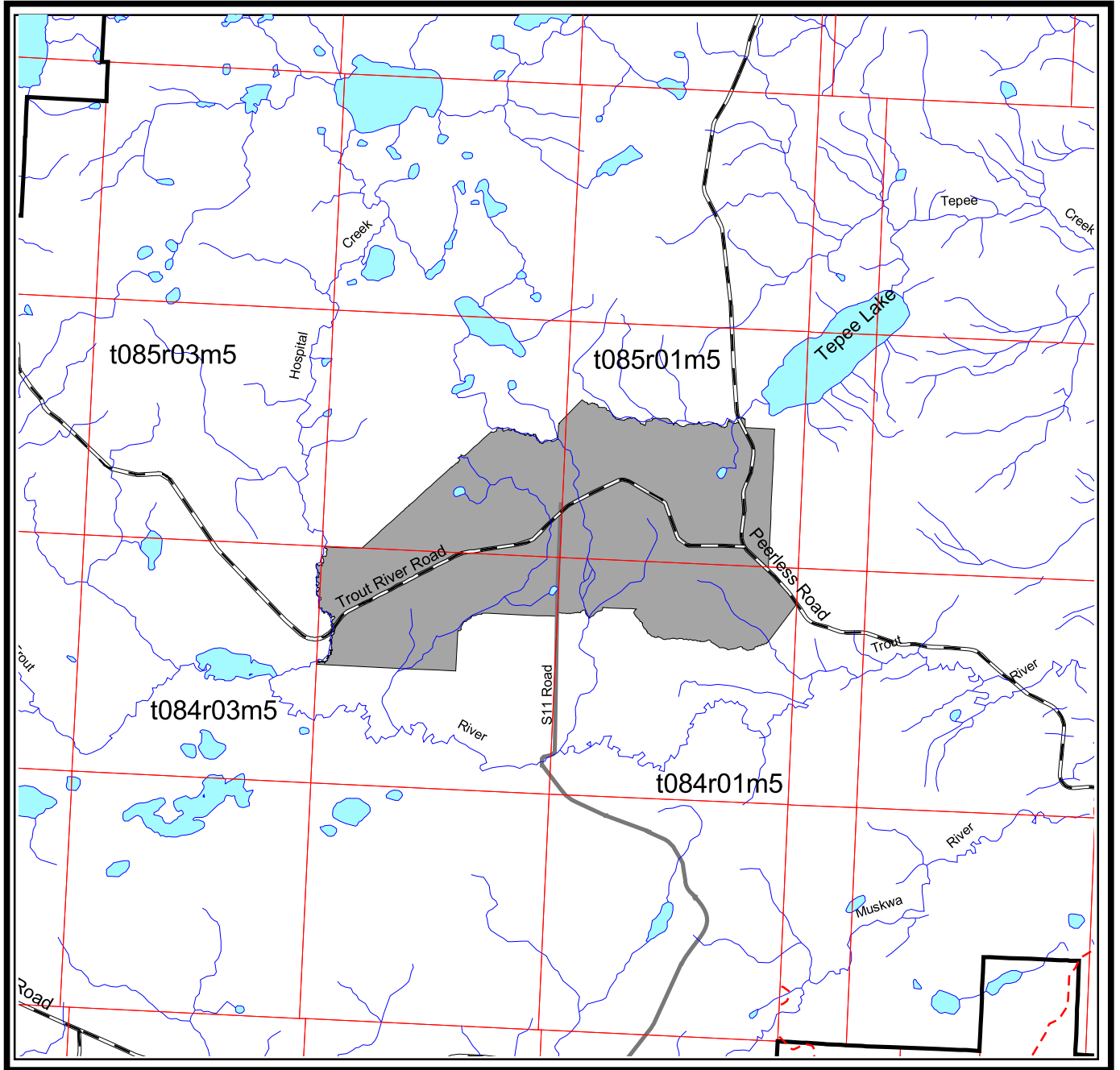
Skid Trail Crossings

Road No.	Crossing Location	Base Info	Field Call	Navigability
12261	1225	UM	E	U
17341	1772	UM	E	U

In the above tables, possible “Field Call” channelled watercourse classifications are ephemeral (E), intermittent (I), transitional (T), small permanent (SP), large permanent (LP), lake < 4 ha (SL), lake ≥ 4 ha (LL) beaver pond (B), spring (S), saturated soils (SS) or no channelled watercourse (NW). The “Navigability” rating identifies channelled watercourse as being potentially navigable (N) or potentially unnavigable (U) based on the possibility of traveling the stream with a vessel. The “Field Call” channelled watercourse classifications in the above table are based on Table 1 of the OGRs at the time, and during the conditions, when layout was conducted.

Planning Unit 085015

Access Map



1:250000



Alberta-Pacific
Forest Industries Inc.



5. Non Timber Values

Copies of this harvest plan will be available for viewing at the Athabasca, Fort McMurray and Lac La Biche libraries, TimberNorth-Athabasca, the Alberta-Pacific Wabasca field office and the Alberta-Pacific mill site.

Public Involvement

The Public Involvement for this plan was completed during the previous year's General Development Plan (GDP) review meetings.

No concerns have been identified through the public involvement process to date.

Aboriginal Consultation

The Aboriginal Consultation for this plan was completed during the previous year's GDP review meetings.

No concerns have been identified through the Aboriginal Consultation process to date.

Trappers

The holders of the following Registered Fur Management Areas (RFMA) have been contacted regarding harvesting activities within Planning Unit 085015:

- 0047
- 0741
- 1485
- 2127
- 2366

Trapper RFMA 2366 identified cutlines and trails he uses for access. These access routes have been mapped and will be maintained during operations.

Guides and Outfitters

The holders of the following permits within Wildlife Management Unit (WMU) 542 have been notified of Alberta-Pacific's harvest plans within Planning Unit 085015:

- 0066
- 0163
- 0490
- 0729
- 0869
- 0995
- 1060

No concerns have been identified through the Guide and Outfitter Consultation process to date.

Forest Recreation Groups

There are currently no active forest recreation groups with interests within this planning unit.

Grazing Lease Operators

There are currently no grazing leases within this planning unit.

Historical Resources

No known historical resource sites are located within this unit. Lands on which historical resource sites are likely to occur will be checked prior to commencement of operations or post harvest.

Forest Aesthetics

There are no forest aesthetics concerns within this planning unit.

Land Use

The road accessing block 08502512361 is displayed as following a pipeline. It has been identified in the field to not have a pipeline. It has been confirmed in AbaData to be LOC 962684.

A Permanent Sample Plot (PSP) is located in Section 18 of Township 85-01-5. Any plots that fell within the blocks scheduled for removal have been removed from the harvest design.

Wildlife

A portion of this planning unit is within a Caribou Range. This planning unit does not fall within a key Wildlife and Biodiversity Zone. Operations will adhere to the Alberta-Pacific wildlife plan submitted annually in the fall.

All known sensitive wildlife sites have been buffered according to section 7.7.6.2 of the OGRs. Some of these have been placed into RAs.

Block Design

Areas of timber to be used as stand structure have been strategically chosen to break up the line of sight in larger blocks. These have been delineated on the maps as RAs.

Access and Access Management

Existing access has been utilized where possible to minimize the clearing of new RoW.

Continuous flow roads have been utilized in larger blocks to reduce skidding distances and cycle times. Their use outside of blocks has been minimized to control access and reduce potential wildlife disturbance.

The following policies have been implemented to mitigate access management concerns:

- Temporary road systems will be “signed” as temporary and closed as soon as possible after the harvesting, hauling, and silviculture activities have been completed.
- Sight lines were considered while designing the harvest blocks and roads. Methods that might have been used are blending blocks and roads into contour levels, terrain features, vegetation cover types, and retained stand structure.

The following access control practices will also be implemented:

- Road systems will be signed as “Temporary Access - Logging in Progress.”
- If a significant delay occurs between harvesting and hauling, temporary access controls on roads will be utilized to prevent access by motorized vehicles. These controls may include the placement of logs on the road, snow berms, and/or removal of creek crossings
- Slash rollback at strategic points (such as at the ends of the block or at the junction of the temporary road and permanent road) will be completed as soon as possible after logging to discourage access by all terrain or four wheel drive vehicles.

Since the planning unit falls within a Caribou Range, the timing of operations will be completed as per the Alberta-Pacific Forest Management Plan (FMP) and OGR’s.

6. Integration with Affected Forest Companies

S11 Logging Company Ltd. has blocks designed within this plan but no integration was in place. S11 Logging Company Ltd. signed off May 2, 2014 regarding this plan.

7. Spatial Harvest Sequence Summary

The table below summarizes the variance (in area) from the SHS, for Alberta-Pacific harvesting. Three of the four twps within PU 085015 did not have SHS stands thus the block area was tracked as additions.

SHS Tracking					
SHS Tracking	Decid. Cover Type	Sw Cover Type	Sb Cover Type	Pj Cover Type	Total Cover Type
Total SHS in Planning Unit	542.3	0.0	0.0	0.0	542.3
FHP SHS Harvest ha.	427.1	0.0	0.0	0.0	427.1
Deleted SHS ha. (reportable)	70.9	0.0	0.0	0.0	70.9
Deferred SHS ha. (reportable)	0.0	0.0	0.0	0.0	0.0
Variance % ⁽¹⁾ (reportable)	14.2%	0.0%	0.0%	0.0%	14.2%
Addition ha.	1,786.2	0.0	0.0	0.0	1,786.2
Bypassed ha.	0.0	0.0	0.0	0.0	0.0
Total Harvest ha. ⁽²⁾	2,213.3	0.0	0.0	0.0	2,213.3

(1) Variance % is the Deleted and Deferred SHS ha. expressed as a percentage of the FHP SHS Harvest, the Deleted and Deferred SHS ha.

(2) Total Harvest ha. is the sum of FHP SHS Harvest ha. and Additions ha.

The tables below summarize the variance (in area) from the SHS into detailed categories, for Alberta-Pacific harvesting.

Variance Summary – Deleted From Net Landbase

Landbase	Area (ha)
Inventory Inconsistencies	14.8
Watercourse and Body Buffer Changes	3.5
Steep Terrain Removals	4.9
Land Use Changes	7.7
Operational and Isolation Changes	12.2
Public Concerns	0.0
Historical Removals	0.0
Aesthetic Removals	0.0
Sensitive Area Removals	13.7
GPS Anomalies	0.0

Variance Summary – Deferred from SHS

Landbase	Area (ha)
Inventory Inconsistencies	6.5
Public Concerns	0.0
Historical Removals	0.0
Aesthetic Removals	0.0
Isolated Stands	0.0
Structure Retention	0.0
Area Left for Wind Firmness	2.2

Variance Summary – Additions

Landbase	Area (ha)
Stands from the SHS outside of years 1-15	1,788.5
Stands that were not part of the net Landbase	0.0

8. Silviculture Information

The following table outlines the initial silviculture declarations for FHP blocks within Planning Unit 085015. Cover group balanced declarations will be submitted post harvest.

Alberta-Pacific Silviculture Declarations

Source Id	Area (ha)	Std_ Mod	Open_ Desig	Species_ Gr	Silv_ Harv
08401527221	11.1	D	CC	DE	CC
08401528861	174.7	D	CC	DE	CC
08401536821	2.3	D	CC	DE	CC
08402519531	9.1	D	CC	DE	CC
08402519761	9.5	D	CC	DE	CC
08402528271	34.4	D	CC	DE	CC
08402529381	24.1	D	PC	DE	UP
08402529841	13.3	D	PC	DE	UP
08402530861	26.4	D	CC	DE	CC
08402531741	11.3	D	CC	DE	CC
08402532651	15.7	D	CC	DE	CC
08402532861	19.2	D	PC	DE	UP
08402533321	4.1	D	PC	DE	UP
08402533541	38.5	D	PC	DE	UP
08402533671	53.1	D	PC	DE	UP
08402534561	121.6	D	PC	DE	UP
08402535471	41.4	D	PC	DE	UP
08402536581	5.4	D	CC	DE	CC
08501502781	2.9	D	CC	DE	CC
<i>08501503261</i>	<i>105.3</i>	<i>D</i>	<i>CC</i>	<i>DE</i>	<i>CC</i>
<i>08501503841</i>	<i>35.8</i>	<i>D</i>	<i>CC</i>	<i>DE</i>	<i>CC</i>
08501505461	168.9	D	PC	DE	UP
08501506831	19.7	D	PC	DE	UP
08501508791	4.0	D	CC	DE	CC
08501509461	38.2	D	CC	DE	CC
08501509571	139.1	D	CC	DE	CC
<i>08501511421</i>	<i>106.7</i>	<i>D</i>	<i>CC</i>	<i>DE</i>	<i>CC</i>
08501511571	1.0	D	CC	DE	CC
08501511731	70.2	D	CC	DE	CC
08501514271	23.4	D	CC	DE	CC
08501514461	1.1	D	CC	DE	CC
08501515261	12.3	D	CC	DE	CC
08501516321	12.5	D	AV	DE	CC

Alberta-Pacific Silviculture Declarations (Cont.)

Source Id	Area (ha)	Std_ Mod	Open_ Desig	Species_ Gr	Silv_ Harv
08501516371	9.9	D	CC	DE	CC
08501516591	17.7	D	CC	DE	CC
08501517341	124.3	D	CC	DE	CC
08501518281	3.2	D	CC	DE	CC
08501518451	7.4	D	CC	DE	CC
08501520511	165.5	D	PC	DE	UP
08501521721	6.2	D	AV	DE	CC
08501521831	4.3	D	CC	DE	CC
08502501341	2.6	D	CC	DE	CC
08502501581	9.3	D	AV	DE	CC
08502502341	50.5	D	CC	DE	CC
08502502571	114.5	D	CC	DE	CC
08502502721	55.3	D	CC	DE	CC
08502503731	26.4	D	CC	DE	CC
08502503761	17.3	D	CC	DE	CC
08502503811	2.2	D	CC	DE	CC
08502504661	4.9	D	CC	DE	CC
08502504741	74.0	D	PC	DE	UP
08502504851	1.6	D	CC	DE	CC
08502505621	31.2	D	CC	DE	CC
08502510491	22.4	D	PC	DE	UP
08502511331	11.1	D	AV	DE	CC
08502511411	14.3	D	AV	DE	CC
08502511881	26.7	D	PC	DE	UP
08502512261	52.8	D	AV	DE	CC
08502512361	2.1	D	CC	DE	CC
08502512881	1.2	D	CC	DE	CC

In the above table, the codes for “Std_Mod”, “Open_Type”, “Species_Gr” and “Silv_Harv” are as per the Alberta Regeneration Information System (ARIS) domain codes. “AV” under “Open_Desig” is not an ARIS code but is used internally for the tracking of understorey avoidance blocks. If a block contains adequate amounts of Balsam Fir, so that fir is an acceptable coniferous regeneration species, a code of FA is used in the “Species_Gr”.

All deciduous blocks will be Leave for Natural (LFN). All coniferous blocks will be treated as per Appendix 4, of the FMP.

9. OGRs Variances

Blocks

SHS Tracking

SHS Tracking	Decid. Cover Type	Sw Cover Type	Sb Cover Type	Pj Cover Type	Total Cover Type
Total SHS in Planning Unit	542.3	0.0	0.0	0.0	542.3
FHP SHS Harvest ha.	427.1	0.0	0.0	0.0	427.1
Deleted SHS ha. (reportable)	70.9	0.0	0.0	0.0	70.9
Deferred SHS ha. (reportable)	0.0	0.0	0.0	0.0	0.0
Variance % ⁽¹⁾ (reportable)	14.2%	0.0%	0.0%	0.0%	14.2%
Addition ha.	1,786.2	0.0	0.0	0.0	1,786.2
Bypassed ha.	0.0	0.0	0.0	0.0	0.0
Total Harvest ha. ⁽²⁾	2,213.3	0.0	0.0	0.0	2,213.3

(1) Variance % is the Deleted and Deferred SHS ha. expressed as a percentage of the FHP SHS Harvest, the Deleted and Deferred SHS ha.

(2) Total Harvest ha. is the sum of FHP SHS Harvest ha. and Additions ha.

The following table identifies blocks greater than 7.0 ha that may exceed 5 % road disturbance once turnabouts are constructed.

Road Percent

Source Id	% Road Class	Comments
08402519531	5	Irregular shaped block.
08402519761	5	Irregular shaped block and access to other block.
08402532651	6	Irregular shaped block and access to other blocks.
08402532861	6	Irregular shaped block.
08501516371	6	Access to other blocks.
08501518451	5	Access to other blocks.
08502501581	6	Small block and access to other blocks.
08502511331	5	Narrow block.

The percent road class values have been achieved by rounding the road disturbance percent to the nearest whole number.

The following blocks are greater than 10ha and contains >2 ha clumps of ≥ 600 stems/ha of White Spruce understorey. However, due to irregular block shape, they will not have high intensity understorey protection and will be harvested using avoidance methods.

08501516321 08502511331 08502511411 08502512261

Roads

Blocks 08502501341 and 08502501581 have cleared areas within the block which can be used as decking for the block thus the roads have been designed to utilize this area.

Road Comments

Road No.	Class	Comments
02721	4W	Road is on built up existing road, no crossings needed.
10491	4W	This road is within 200m of a Lake.
12261	4S	Mapped pipe is LOC 962684. No crossing required.
15261	4W	This road is within 200m of a Lake.

Road 10491 is within 200 meters of a large lake for 793 meters of the road starting at grid location 1033 and ending at grid location 1037.

The “Distance of Watercourse From Road” is the minimum distance allowed in Table 2 of the OGRs without ESRD approval. The roads listed are within those minimum distances. Please refer to the FHP map and layout block maps for more information.