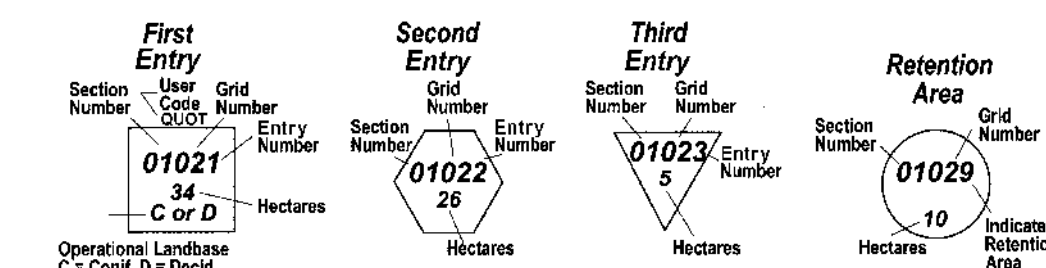


Planning Unit 083224

Alberta-Pacific Harvest Plan



Operational Harvest

- Alberta-Pacific First Entry Block (1)
- Alberta-Pacific Second Entry Block (2)
- Alberta-Pacific Third Entry Block (3)
- Quota Holder First Entry Block (4)
- Quota Holder Second Entry Block (5)
- Quota Holder Third Entry Block (6)
- Misc. Timber Use First Entry Block (7)
- Misc. Timber Use Subsequent Entry (8)
- Retention Area (9)
- Proposed Contingency Blocks
- Delayed Blocks
- Harvested Blocks

Operational User Codes

- MTU - Misc. Timber Use First Pass
- MTU2 - Misc. Timber Use Second Pass
- MTU3 - Misc. Timber Use Third Pass
- NFPL - Northland Forest Products
- STJE - St. Jean Lumber
- SPML - Spuceland Millworks
- QUOT - Quota Holder
- S11 - S11 Logging Company Ltd.
- VAND - Vanderwell Contractors
- WEST - Millar Western
- APLY - Alberta Plywood Ltd.
- BOBL - Ed Bobocel Lumber(1993) Ltd.
- GHLT - Ghost Lake Timber Inc.

Proposed Crossing and Type

- Water Course Crossing
- Road Cross Agreement
- Water Course Crossing ID#
Section Number: 1575, Grid Number: 1575
- Road Cross Agreement ID#
Section Number: 1575, Grid Number: 1575

Proposed Roads

- Class 1,2,3 Permanent
- Class 4 Permanent
- Class 4 Summer
- Class 4 Winter
- Skid Trail

Transportation

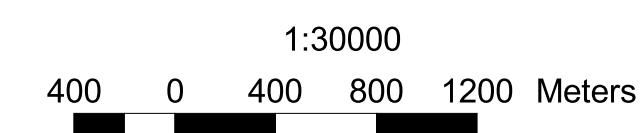
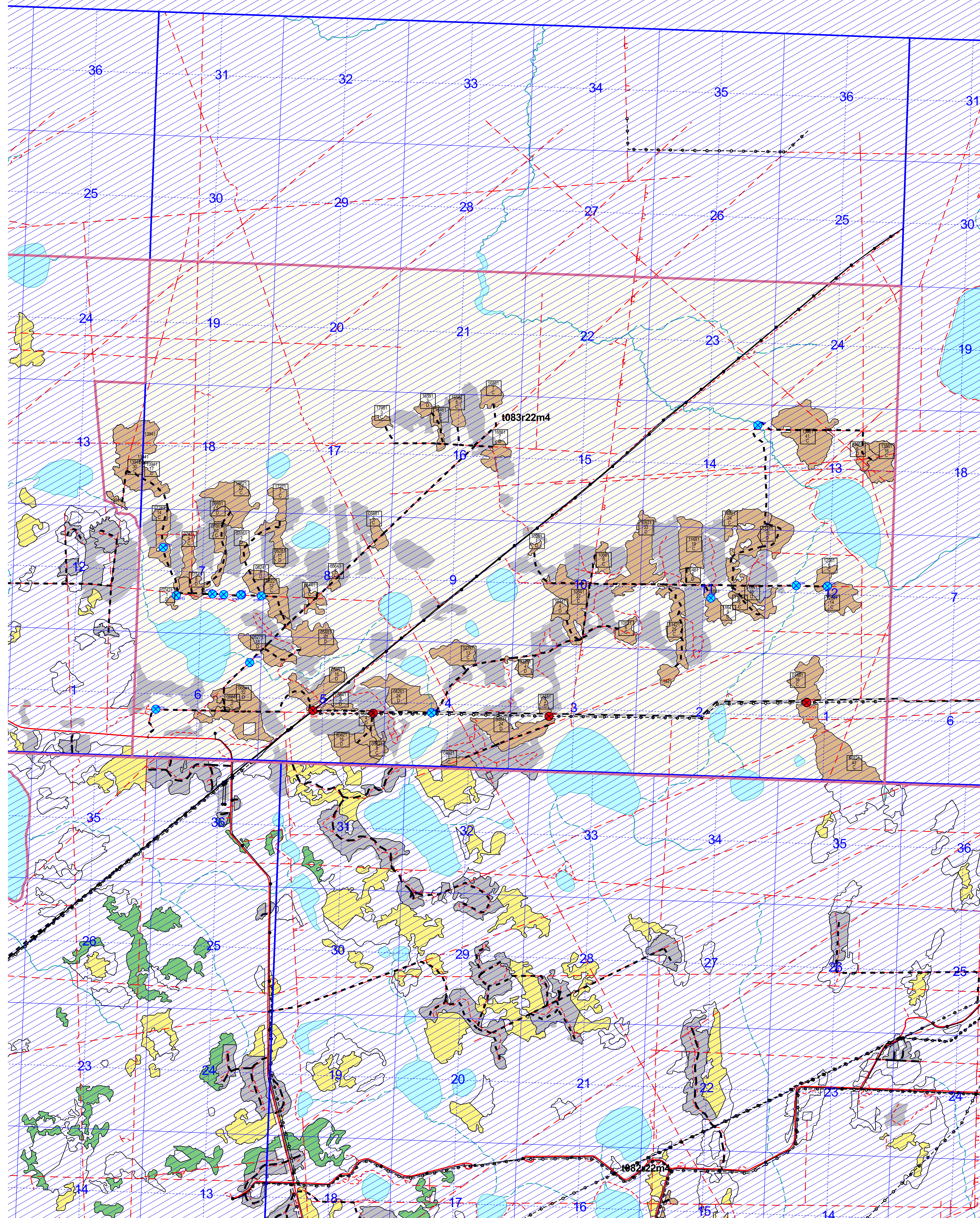
- Gravel Road
- Gravel Road - 1 Lane Each Way
- Gravel Road - Primary Highway
- Gravel Road - Secondary Highway
- Paved Road
- Paved Road - Primary Highway
- Paved Road - Secondary Highway
- Road - Unimproved
- Trail
- Rail Line - Single Track
- Rail Line - Spur
- Seismic Line
- Transmission Line
- Pipeline

Drainage and Related Features

- Lake or Major River
- Indefinite Stream
- Intermittent Stream
- Perennial Stream

Cadastral Features

- Caribou Zone
- Ungulate Zone
- Forest Management Agreement Area Boundary
- Planning Unit Boundary
- Township
- Section
- Quarter Section



Plot generated on Wednesday February 20, 2013 at 3:41PM

