

Planning Unit 081074

Forest Harvest Plan

1. Introduction

This Forest Harvest Plan (FHP) for Planning Unit 081074 includes maps and reports that clearly show and document the planned harvest area boundaries, roads and water crossings within the planning unit.

This plan is being submitted for appraisal, for a 5-year FHP approval under the 2016-17 Alberta-Pacific Forest Industries Inc. (Alberta-Pacific) Annual Operating Plan (AOP). Additional area has been added to FHP that was approved on July 25, 2012.

2. Planning Unit Specific Comments

Planning Unit 081074 is located northwest of the Janvier Indian Reserve.

The planning unit is located in Forest Management Unit (FMU) L11. Alberta-Pacific has rights to D and DC as deciduous landbase and CD and C as coniferous landbase.

The Community Timber Permit Program (CTPP) has been allocated a portion of the coniferous Annual Allowable Cut (AAC) from the C and CD cover groups.

The harvest design utilizes the 2006 Spatial Harvest Sequence (SHS) and additional stands. The plan and SHS were designed to remove second pass timber within the area.

Integration

There are no active timber permits or licenses held by other users within this planning unit.

Watershed

The Kettle River that flows through the central portion of the planning unit has been identified as a fish bearing stream. The creeks that form the south and far northeast boundaries of the planning unit have also been identified as fish bearing streams. The creeks flowing through Sections 15, 17, 18, 19, 22 and the southwest portion of 23 in Twp. 081-07-4 are also fish bearing streams. These creeks are buffered accordingly.

Kettle River has been identified as a navigable water way

All unsurveyed creeks have been buffered and crossed as though they were fish bearing.

Stand Structure

An average of 5% of the merchantable volume will be left in stand structure over the FMU. The structure will be left as layout patches, and as single trees and small clumps of timber at the operators' discretion.

Debris Management

One or more of the following debris management strategies apply for blocks within this planning unit:

- Methods described in the Forest and Prairie Protection Act and Regulations, and/or
- Thinly spread slash throughout the block, and/or
- Stump side processing.

Blocks within this planning unit will not utilize the retention of debris piles as a management strategy.

The deciduous utilization standard will be 15/10. The coniferous utilization standard will be 15/11.

Design Comments

During the layout phase of this operation, Alberta-Pacific looked for signs of insect or disease infestations. Spruce Budworm was found in the understorey in the eastern part of the planning unit. This was previously reported to Alberta Agriculture and Forestry (AAF).

A density stands not included in the SHS were added to the plan after field checking, this contributed to the additions exceeding the deletions as outlined in the variance table.

3. Block Information

The following table summarizes the volumes within Alberta-Pacific's FHP blocks.

Landbase Volume Summary

Company	Area (ha)	Decid (m3)	Conif (m3)	Inc Conif (m3)	Total (m3)
Alberta-Pacific Coniferous	563	19,457	45,483	888	65,828
Alberta-Pacific Deciduous	1,531	302,098	2,452	30,935	335,485

Landbase Volume Summary (Harvested Blocks)

Company	Area (ha)	Decid (m3)	Conif (m3)	Inc Conif (m3)	Total (m3)
Alberta-Pacific Coniferous	106	0	0	0	0
Alberta-Pacific Deciduous	490	0	0	0	0

The following Alberta-Pacific FHP blocks will have their coniferous volume hauled as Forest Management Agreement (FMA) L11 primary coniferous chargeable:

08106419111
08107422371

08106421211

Alberta-Pacific Deciduous First Entry Block Listing

(Values Affected by Rounding)

Source Id	Opening Num	Harv Season	Conif Charge	Detail Plan	Area (ha)	Decid (m3)	Conif (m3)	Inc Conif (m3)	Total (m3)
08007434661	4070803466	F	INC	U	43	8,904	0	299	9,203
08007435281	4070803528	N	INC	U	48	12,055	0	693	12,748
08106407391	4060810739	N	INC		10	1,605	0	182	1,787
08106409331	4060810933	N	INC		2	363	0	11	374
08106416261	4060811626	N	INC	U	13	2,028	0	462	2,490
08106416321	4060811632	N	INC	U	16	1,835	0	133	1,968
08106418321	4060811832	N	INC		5	1,179	0	36	1,215
08106419111	4060811911	N	FMA		7	1,043	0	234	1,277
08106419331	4060811933	N	INC		13	2,479	0	136	2,615
08106419431	4060811943	N	INC		5	1,004	0	32	1,036
08106419461	4060811946	N	INC		7	1,454	0	548	2,002
08106420621	4060812062	F	INC	U	8	1,490	0	190	1,680
08106420851	4060812085	F	INC		2	574	0	33	607
08106421211	4060812121	F	FMA		6	954	427	336	1,717
08106421311	4060812131	F	INC		5	1,334	0	41	1,375
08106421381	4060812138	F	INC	U	34	4,566	0	272	4,838

**Alberta-Pacific Deciduous First Entry Block Listing
(Cont.)**

(Values Affected by Rounding)

Source Id	Opening Num	Harv Season	Conif Charge	Detail Plan	Area (ha)	Decid (m3)	Conif (m3)	Inc Conif (m3)	Total (m3)
08106430371	4060813037	F	INC		56	12,590	0	2,765	15,355
08107402281	4070810228	F	INC		4	899	0	34	933
08107402551	4070810255	N	INC		19	4,745	0	151	4,896
08107402911	4070810291	N	INC	U	16	3,488	0	108	3,596
08107403631	4070810363	N	INC		36	8,679	0	675	9,354
08107403641	4070810364	N	INC		4	574	0	110	684
08107403661	4070810366	F	INC		4	777	0	39	816
08107404141	4070810414	N	INC		2	484	0	20	504
08107404311	4070810431	N	INC		28	6,971	0	239	7,210
08107404371	4070810437	F	INC		8	1,470	407	198	2,075
08107404631	4070810463	N	INC		3	584	0	144	728
08107404641	4070810464	N	INC		5	1,160	0	140	1,300
08107404681	4070810468	N	INC		31	7,665	0	237	7,902
08107404821	4070810482	N	INC	U	6	1,210	0	210	1,420
08107404841	4070810484	N	INC		5	1,043	0	115	1,158
08107405411	4070810541	F	INC	U	31	5,380	0	615	5,995
08107405881	4070810588	N	INC		14	3,226	0	174	3,400
08107406281	4070810628	F	INC		2	337	0	39	376
08107406641	4070810664	F	INC		20	4,214	0	983	5,197
08107407291	4070810729	F	INC		8	937	0	246	1,183
08107407361	4070810736	F	INC		20	3,421	0	545	3,966
08107407491	4070810749	F	INC		6	937	0	109	1,046
08107407791	4070810779	N	INC		6	878	0	267	1,145
08107407871	4070810787	N	INC		2	249	0	82	331
08107408391	4070810839	N	INC		16	2,786	0	141	2,927
08107408671	4070810867	N	INC		8	1,319	0	46	1,365
08107408781	4070810878	N	INC		6	868	0	73	941
08107408791	4070810879	N	INC		24	3,966	0	411	4,377
08107408821	4070810882	F	INC	U	4	381	0	12	393
08107408841	4070810884	N	INC		10	1,762	0	56	1,818
08107409131	4070810913	F	INC		3	289	0	13	302
08107409171	4070810917	N	INC		3	745	13	104	862
08107409341	4070810934	F	INC		12	1,616	15	171	1,802
08107409391	4070810939	F	INC	U	21	4,252	0	493	4,745
08107409731	4070810973	N	INC		28	5,812	0	1,011	6,823
08107410221	4070811022	F	INC		3	668	0	21	689
08107410411	4070811041	F	INC		2	401	0	39	440
08107410461	4070811046	F	INC		6	1,283	0	149	1,432
08107410521	4070811052	F	INC		4	845	0	185	1,030

**Alberta-Pacific Deciduous First Entry Block Listing
(Cont.)**

(Values Affected by Rounding)

Source Id	Opening Num	Harv Season	Conif Charge	Detail Plan	Area (ha)	Decid (m3)	Conif (m3)	Inc Conif (m3)	Total (m3)
08107411241	4070811124	F	INC	U	33	5,195	335	833	6,363
08107412231	4070811223	N	INC		8	1,924	0	146	2,070
08107412421	4070811242	F	INC		10	1,996	0	97	2,093
08107412441	4070811244	F	INC		24	3,877	0	122	3,999
08107412861	4070811286	F	INC		14	3,368	0	322	3,690
08107415281	4070811528	F	INC		12	2,448	0	476	2,924
08107416571	4070811657	F	INC		16	4,186	0	146	4,332
08107416791	4070811679	F	INC		19	4,951	0	154	5,105
08107416811	4070811681	F	INC		22	4,070	0	735	4,805
08107417331	4070811733	N	INC		19	3,056	0	238	3,294
08107417571	4070811757	F	INC		25	6,002	0	187	6,189
08107418291	4070811829	F	INC		8	1,147	0	94	1,241
08107418841	4070811884	N	INC		11	1,515	0	430	1,945
08107419391	4070811939	F	INC		3	523	0	43	566
08107419621	4070811962	F	INC		3	681	0	80	761
08107419641	4070811964	F	INC		6	982	0	55	1,037
08107420281	4070812028	F	INC		9	1,507	73	246	1,826
08107420361	4070812036	F	INC		5	1,048	0	32	1,080
08107420731	4070812073	F	INC		5	1,247	0	41	1,288
08107420841	4070812084	F	INC	U	27	6,014	0	193	6,207
08107421241	4070812124	F	INC		13	2,862	0	89	2,951
08107421281	4070812128	F	INC		8	1,987	0	61	2,048
08107421461	4070812146	F	INC	T	11	2,616	0	81	2,697
08107421641	4070812164	F	INC		7	1,382	0	212	1,594
08107421881	4070812188	F	INC		26	6,579	0	328	6,907
08107422221	4070812222	F	INC		1	294	0	9	303
08107422331	4070812233	F	INC		2	526	0	17	543
08107422371	4070812237	F	FMA		10	2,124	0	617	2,741
08107422421	4070812242	F	INC		3	619	0	20	639
08107422461	4070812246	F	INC		3	806	0	90	896
08107422481	4070812248	F	INC		8	2,120	0	98	2,218
08107422681	4070812268	F	INC		8	1,220	148	232	1,600
08107422871	4070812287	F	INC		3	674	0	79	753
08107423661	4070812366	N	INC		9	2,024	0	237	2,261
08107423681	4070812368	N	INC	U	42	8,850	387	1,081	10,318
08107423731	4070812373	F	INC		5	963	0	214	1,177
08107423821	4070812382	F	INC		5	1,188	0	36	1,224
08107423841	4070812384	F	INC		2	409	0	13	422
08107423851	4070812385	F	INC		1	283	0	32	315

**Alberta-Pacific Deciduous First Entry Block Listing
(Cont.)**

(Values Affected by Rounding)

Source Id	Opening Num	Harv Season	Conif Charge	Detail Plan	Area (ha)	Decid (m3)	Conif (m3)	Inc Conif (m3)	Total (m3)
08107423991	4070812399	F	INC		6	1,187	0	37	1,224
08107424171	4070812417	F	INC		6	1,522	0	47	1,569
08107425191	4070812519	F	INC		4	805	0	322	1,127
08107425361	4070812536	N	INC		4	838	0	25	863
08107428371	4070812837	F	INC		2	276	0	91	367
08107428671	4070812867	F	INC		3	577	0	24	601
08107429311	4070812931	F	INC		11	2,207	0	186	2,393
08107429441	4070812944	F	INC		2	524	0	22	546
08107429511	4070812951	F	INC		16	3,609	0	133	3,742
08107430441	4070813044	F	INC		4	691	0	52	743
08107430761	4070813076	F	INC		44	6,972	70	478	7,520
08107431541	4070813154	F	INC		4	629	0	82	711
08107431611	4070813161	F	INC		3	503	0	21	524
08107431741	4070813174	F	INC		8	1,407	0	53	1,460
08107432821	4070813282	F	INC		16	3,365	0	225	3,590
08107432871	4070813287	F	INC		6	869	0	109	978
08107433221	4070813322	F	INC		21	4,258	129	187	4,574
08107433361	4070813336	F	INC		3	510	0	21	531
08107433651	4070813365	F	INC		4	699	0	22	721
08107433671	4070813367	F	INC		2	367	0	12	379
08107434371	4070813437	F	INC		3	672	0	41	713
08107434461	4070813446	F	INC		14	2,996	0	92	3,088
08108401881	4080810188	F	INC		6	742	0	155	897
08108401891	4080810189	F	INC		11	1,593	0	214	1,807
08108412561	4080811256	F	INC		1	54	0	28	82
08108413411	4080811341	F	INC		70	11,935	266	2,368	14,569
08108413461	4080811346	F	INC		3	272	0	129	401
08108423861	4080812386	F	INC		16	2,218	24	607	2,849
08108423871	4080812387	F	INC		9	2,139	0	166	2,305
08108424361	4080812436	F	INC		4	490	0	123	613
08108424371	4080812437	F	INC		3	214	0	149	363
08108424441	4080812444	F	INC		4	600	0	79	679
08108424731	4080812473	F	INC		51	10,184	73	1,219	11,476
08108426821	4080812682	F	INC		11	1,133	85	392	1,610
Total					1,531	302,098	2,452	30,935	335,485

The conifer within Block 08106419111, 08106421211 and 08107422371 has been assigned White Spruce cover type for coniferous volume chargability

Alberta-Pacific Coniferous First Entry Block Listing
White Spruce

(Values Affected by Rounding)

Source Id	Opening Num	Harv Season	Conif Charge	Detail Plan	Area (ha)	Decid (m3)	Conif (m3)	Inc Conif (m3)	Total (m3)
08106407441	4060810744	F	FMA		3	27	710	0	737
08106420431	4060812043	F	FMA		2	21	538	0	559
08107404731	4070810473	N	FMA		13	1,241	2,087	9	3,337
08107404741	4070810474	N	FMA		5	275	963	0	1,238
08107405861	4070810586	N	FMA		2	174	320	0	494
08107410621	4070811062	F	FMA		1	78	183	0	261
Total					26	1,816	4,801	9	6,626

Alberta-Pacific Coniferous First Entry Block Listing
Pine

(Values Affected by Rounding)

Source Id	Opening Num	Harv Season	Conif Charge	Detail Plan	Area (ha)	Decid (m3)	Conif (m3)	Inc Conif (m3)	Total (m3)
08007434281	4070803428	F	FMA		15	1,390	1,392	42	2,824
08106405731	4060810573	N	FMA		6	79	713	0	792
08106406431	4060810643	N	FMA		24	326	3,466	0	3,792
08106420741	4060812074	F	FMA		1	85	90	0	175
08107402271	4070810227	N	FMA		5	259	289	0	548
08107403831	4070810383	F	FMA		5	112	245	0	357
08107403881	4070810388	F	FMA		9	450	1,008	0	1,458
08107404241	4070810424	N	FMA		7	253	348	0	601
08107405461	4070810546	F	FMA		5	42	379	0	421
08107405631	4070810563	F	FMA		7	314	482	0	796
08107406451	4070810645	F	FMA		2	126	274	0	400
08107406711	4070810671	F	FMA		32	965	2,995	0	3,960
08107409861	4070810986	F	FMA		3	9	286	0	295
08107410331	4070811033	F	FMA		3	42	380	0	422
08107410471	4070811047	F	FMA		2	34	114	0	148
08107410751	4070811075	F	FMA		3	7	262	0	269
08107415881	4070811588	F	FMA		13	311	1,250	0	1,561
08107417281	4070811728	F	FMA		32	1,117	2,051	6	3,174
08107418481	4070811848	F	FMA		54	686	3,784	15	4,485
08107419261	4070811926	F	FMA		20	867	1,199	14	2,080
08107419281	4070811928	F	FMA		10	186	769	0	955
08107419321	4070811932	F	FMA		19	1,309	1,004	37	2,350
08107419551	4070811955	F	FMA		11	248	791	0	1,039
08107419741	4070811974	F	FMA		14	99	966	0	1,065
08107420241	4070812024	F	FMA		21	253	1,010	0	1,263

Pine (Cont.)

(Values Affected by Rounding)

Source Id	Opening Num	Harv Season	Conif Charge	Detail Plan	Area (ha)	Decid (m3)	Conif (m3)	Inc Conif (m3)	Total (m3)
08107420461	4070812046	F	FMA		3	6	202	0	208
08107422841	4070812284	F	FMA		3	34	263	0	297
08107429671	4070812967	F	FMA		2	13	111	0	124
08107431221	4070813122	F	FMA		10	192	798	0	990
08108401961	4080810196	F	FMA		8	84	543	0	627
08108412711	4080811271	F	FMA		9	200	1,160	11	1,371
08108412761	4080811276	F	FMA		42	1,937	2,874	325	5,136
08108413241	4080811324	F	FMA		3	24	217	0	241
08108413371	4080811337	F	FMA		4	61	513	0	574
08108413441	4080811344	F	FMA		13	544	1,487	0	2,031
08108413941	4080811394	F	FMA		9	504	425	0	929
08108424331	4080812433	F	FMA		6	178	301	0	479
08108424561	4080812456	F	FMA		2	18	165	0	183
08108424841	4080812484	F	FMA		6	162	360	0	522
08108425311	4080812531	F	FMA		37	1,446	2,126	180	3,752
08108426281	4080812628	F	FMA		3	21	193	0	214
08108426911	4080812691	F	FMA		3	168	265	0	433
08108426931	4080812693	F	FMA		2	54	116	0	170
08108435331	4080813533	F	FMA		4	322	131	127	580
08108436621	4080813662	F	FMA		43	2,097	2,696	122	4,915
Total					535	17,634	40,493	879	59,006

**Alberta-Pacific Coniferous First Entry Block Listing
Black Spruce**

(Values Affected by Rounding)

Source Id	Opening Num	Harv Season	Conif Charge	Detail Plan	Area (ha)	Decid (m3)	Conif (m3)	Inc Conif (m3)	Total (m3)
08107405671	4070810567	F	FMA		2	7	189	0	196
Total					2	7	189	0	196

Deciduous Unscheduled Block Listing
(Values Affected by Rounding)

Source Id	Opening Num	Status	Area (ha)	Decid (m3)	Conif (m3)	Inc Conif (m3)	Total (m3)
08106418271	4060811827	Harv Comp	16	0	0	0	0
08106418881	4060811888	Harv Comp	46	0	0	0	0
08106430121	4060813012	Harv Comp	52	0	0	0	0
08107411741	4070811174	Harv Comp	26	0	0	0	0
08107411881	4070811188	Harv Comp	24	0	0	0	0
08107413181	4070811318	Harv Comp	5	0	0	0	0
08107413331	4070811333	Harv Comp	10	0	0	0	0
08107413341	4070811334	Harv Comp	13	0	0	0	0
08107413421	4070811342	Harv Comp	3	0	0	0	0
08107413481	4070811348	Harv Comp	5	0	0	0	0
08107413831	4070811383	Harv Comp	36	0	0	0	0
08107414441	4070811444	Harv Comp	86	0	0	0	0
08107414681	4070811468	Harv Comp	4	0	0	0	0
08107414731	4070811473	Harv Comp	13	0	0	0	0
08107414821	4070811482	Harv Comp	2	0	0	0	0
08107423441	4070812344	Harv Comp	29	0	0	0	0
08107424241	4070812424	Harv Comp	30	0	0	0	0
08107424971	4070812497	Harv Comp	90	0	0	0	0
Total			490	0	0	0	0

Coniferous Unscheduled Block Listing
(Values Affected by Rounding)

Source Id	Opening Num	Status	Area (ha)	Decid (m3)	Conif (m3)	Inc Conif (m3)	Total (m3)
08106407691	4060810769	Harv Comp	35	0	0	0	0
08106418741	4060811874	Harv Comp	14	0	0	0	0
08107412191	4070811219	Harv Comp	3	0	0	0	0
08107413771	4070811377	Harv Comp	9	0	0	0	0
08107414861	4070811486	Harv Comp	15	0	0	0	0
08107423621	4070812362	Harv Comp	10	0	0	0	0
08107424611	4070812461	Harv Comp	7	0	0	0	0
08107425321	4070812532	Harv Comp	13	0	0	0	0
Total			106	0	0	0	0

Retention Area Listing
(Values Affected by Rounding)

Retention Id	Area (ha)	Decid (m3)	Conif (m3)	Inc Conif (m3)	Total (m3)
11939	2	677	0	20	697
12139	3	971	0	30	1,001
21299	3	455	0	14	469
21819	3	939	0	29	968
29459	2	499	0	15	514
Total	14	3,541	0	108	3,649

4. Access and Road Information

Landuse agreements will be in place prior to use of any third party dispositions being used.

Existing access has been utilized where possible to minimize the clearing of new Right of Way (RoW).

New access and channelled watercourse crossings will be reclaimed in order to restrict access. All terrain vehicle (ATV) access may be left to facilitate silviculture activities.

New access and channelled watercourse crossings will be reclaimed as per Section 11.3.4 of the OGRs. Road reclamation and abandonment details are listed in the AOP when the blocks and roads are scheduled.

Main Access and Crossings

Road No.	Class	Length (Km)	Construction Season	Crossing Location	Field Call	Navigability
01881	4W	0.43	Frozen	0197	E	U
01891	4W	0.37	Frozen			
01961	4W	0.79	Frozen			
02271	4S	0.52	Non-Frozen			
02281	4W	0.15	Frozen			
02551	4S	0.91	Non-Frozen			
02911	4S	0.54	Non-Frozen	0173	LP	U
03631	4S	1.46	Non-Frozen	0313	E	U
				0341	E	U
				0372	E	U
03641	4S	0.01	Non-Frozen			
03661	4W	0.25	Frozen			
03881	4W	0.94	Frozen	0388	E	U
04141	4S	0.36	Non-Frozen			
04241	4S	0.30	Non-Frozen			
04311	4S	1.15	Non-Frozen	0422	E	U
				0442	E	U
				0462	I	U
04371	4W	0.23	Frozen			
04631	4S	0.23	Non-Frozen	0472	I	U
04641	4S	0.05	Non-Frozen	0475	E	U
04681	4S	0.92	Non-Frozen			
04731	4S	0.90	Non-Frozen	0312	E	U
				0491	E	U
04741	4S	0.69	Non-Frozen			
04821	4S	0.25	Non-Frozen			
04841	4S	0.05	Non-Frozen			
05411	4W	0.71	Frozen			
05461	4W	0.48	Frozen			
05631	4W	0.83	Frozen			
05671	4W	0.05	Frozen			

Main Access and Crossings (Cont.)

Road No.	Class	Length (Km)	Construction Season	Crossing Location	Field Call	Navigability
05731	4S	0.55	Non-Frozen			
05881	4S	0.83	Non-Frozen			
06281	4W	0.22	Frozen			
06431	4S	0.03	Non-Frozen			
06451	4W	0.37	Frozen			
06641	4W	0.94	Frozen			
06711	4W	2.12	Frozen	0511	T	U
				0521	SP	U
07291	4W	0.65	Frozen			
07361	4W	0.63	Frozen	0714	SP	U
07391	4S	0.51	Non-Frozen	0717	E	U
				0728	E	U
07441	4W	0.44	Frozen			
07491	4W	0.05	Frozen			
07791	4S	0.85	Non-Frozen			
07871	4S	0.10	Non-Frozen			
08391	4S	1.74	Non-Frozen	0826	E	U
08671	4S	0.28	Non-Frozen			
08781	4S	0.42	Non-Frozen			
08791	4S	0.96	Non-Frozen	1762	E	U
08821	4S	0.12	Non-Frozen			
08841	4S	0.03	Non-Frozen			
09131	4S	0.66	Non-Frozen	0913	T	U
09171	4S	0.37	Non-Frozen			
	4W	0.11	Frozen			
09331	4S	0.09	Non-Frozen			
09341	4S	0.52	Non-Frozen			
09391	4W	1.10	Frozen	0919	LP	N
				0929	E	U
09731	4S	0.78	Non-Frozen	0981	E	U
09861	4W	0.55	Frozen			
10221	4W	0.50	Frozen			
10331	4W	0.35	Frozen			
10411	4W	0.27	Frozen			
10461	4W	0.77	Frozen			
10521	4W	0.47	Frozen			
10621	4W	0.83	Frozen			
10751	4W	0.38	Frozen			
11241	4W	0.42	Frozen			
12231	4S	0.18	Non-Frozen			
12441	4W	1.14	Frozen	1254	E	U
				1263	E	U
12561	4W	0.03	Frozen			
12711	4W	0.57	Frozen			
12761	4W	1.53	Frozen	1273	SP	U
				1296	E	U
12861	4W	0.23	Frozen	0715	E	U
13241	4W	0.29	Frozen			
13371	4W	0.27	Frozen			
13411	4W	2.53	Frozen			
13441	4W	1.37	Frozen			

Main Access and Crossings (Cont.)

Road No.	Class	Length (Km)	Construction Season	Crossing Location	Field Call	Navigability
13461	4W	0.08	Frozen			
13941	4W	0.58	Frozen			
15281	4W	1.08	Frozen	1529	E	U
15651	4W	0.70	Frozen			
15881	4S	2.93	Non-Frozen	1441	I	U
				1194	SP	U
	4W	0.95	Frozen	1585	SP	U
16261	4S	0.38	Non-Frozen			
16321	4S	0.98	Non-Frozen			
16571	4W	0.07	Frozen			
16791	4W	1.51	Frozen			
16811	4W	0.25	Frozen	0987	T	U
17281	4W	1.84	Frozen	1739	SP	U
17331	4S	1.34	Non-Frozen			
17571	4W	0.08	Frozen			
18291	4W	0.03	Frozen			
18321	4S	0.90	Non-Frozen			
18481	4W	2.85	Frozen			
18841	4S	1.65	Non-Frozen	1745	E	U
19261	4W	0.85	Frozen			
19281	4W	0.39	Frozen			
19321	4W	1.25	Frozen			
19331	4S	0.82	Non-Frozen			
19391	4W	0.39	Frozen			
19431	4S	2.04	Non-Frozen	1834	I	U
19461	4S	0.74	Non-Frozen			
19551	4W	0.77	Frozen			
19621	4W	0.04	Frozen			
19641	4W	0.28	Frozen			
19741	4W	0.75	Frozen			
20241	4W	0.96	Frozen	2032	I	U
20281	4W	0.03	Frozen			
20361	4W	1.40	Frozen			
20431	4W	0.51	Frozen			
20461	4W	0.16	Frozen			
20621	4W	0.86	Frozen			
20731	4W	0.42	Frozen			
20841	4W	0.45	Frozen			
20851	4W	0.37	Frozen			
21211	4W	0.88	Frozen			
21241	4W	0.73	Frozen			
21281	4W	0.72	Frozen			
21311	4W	0.13	Frozen			
21381	4W	1.35	Frozen			
21461	4W	1.00	Frozen			
21641	4W	1.26	Frozen			
21881	4W	0.55	Frozen			
22221	4W	0.10	Frozen			
22331	4W	0.33	Frozen			
22371	4W	1.37	Frozen	2184	E	U
22421	4W	0.20	Frozen			

Main Access and Crossings (Cont.)

Road No.	Class	Length (Km)	Construction Season	Crossing Location	Field Call	Navigability
22461	4W	0.64	Frozen	2244	I	U
22481	4W	0.80	Frozen			
22681	4W	0.24	Frozen	2257	I	U
22841	4W	0.66	Frozen	2266	I	U
23661	4S	2.41	Non-Frozen			
23681	4S	1.16	Non-Frozen			
23731	4W	0.34	Frozen			
23821	4W	0.27	Frozen			
23841	4W	0.21	Frozen			
23851	4W	0.07	Frozen			
23861	4W	0.96	Frozen	2414	E	U
23871	4W	0.09	Frozen	2377	I	U
23991	4W	0.51	Frozen			
24171	4W	0.46	Frozen			
24331	4W	1.26	Frozen			
24361	4W	0.20	Frozen			
24371	4W	0.01	Frozen			
24441	4W	0.33	Frozen			
24561	4W	0.39	Frozen			
24731	4W	1.61	Frozen			
24841	4W	0.69	Frozen	2484	E	U
25191	4S	0.84	Non-Frozen			
25311	4W	1.71	Frozen			
25361	4S	1.52	Non-Frozen			
26281	4W	2.23	Frozen	2527	I	N
				2697	E	N
26821	4W	0.32	Frozen			
26911	4W	0.13	Frozen	2692	E	U
26931	4W	0.18	Frozen	2693	NW	U
28371	4W	0.75	Frozen			
28671	4W	2.19	Frozen			
29311	4W	0.91	Frozen			
29441	4W	0.27	Frozen			
29511	4W	1.06	Frozen			
29671	4W	0.48	Frozen			
30371	4S	0.79	Non-Frozen	1938	E	U
				1947	SP	U
				3031	SP	U
	4W	0.84	Frozen	3043	E	U
				3044	E	U
30441	4W	0.79	Frozen	3042	E	U
30761	4W	3.24	Frozen			
31221	4W	0.60	Frozen			
31541	4W	0.52	Frozen			
31611	4W	0.86	Frozen			
31741	4W	0.19	Frozen			
32821	4W	1.11	Frozen			
32871	4W	1.04	Frozen	3294	T	U
33221	4W	1.17	Frozen			
33361	4W	1.27	Frozen	3345	SP	U
33651	4W	0.36	Frozen			

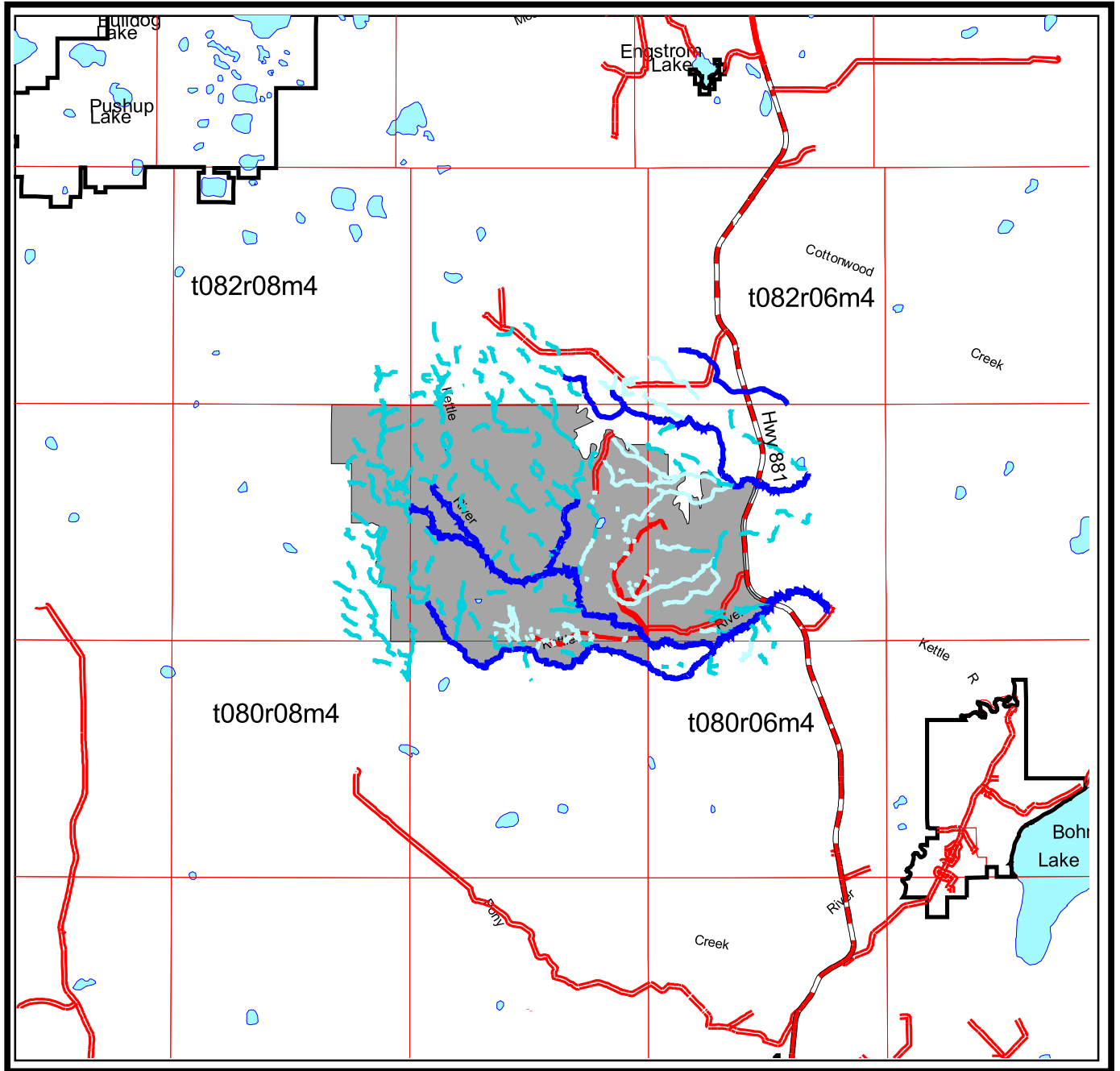
Main Access and Crossings (Cont.)

Road No.	Class	Length (Km)	Construction Season	Crossing Location	Field Call	Navigability
33671	4W	0.54	Frozen			
34281	4W	0.91	Frozen	3429	I	U
34371	4W	0.10	Frozen			
34461	4W	1.53	Frozen	3374	SP	U
34661	4W	0.24	Frozen			
35281	4S	0.81	Non-Frozen	0222	E	U
35331	4W	0.88	Frozen			
36621	4W	1.89	Frozen			
Total Class 4W:		90.93				
Total Class 4S:		36.67				
Total Class 4P:		13.33				

In the above table, possible “Field Call” channelled watercourse classifications are ephemeral (E), intermittent (I), transitional (T), small permanent (SP), large permanent (LP), lake < 4 ha (SL), lake ≥ 4 ha (LL) beaver pond (B), spring (S), saturated soils (SS) or no channelled watercourse (NW). The “Navigability” rating identifies channelled watercourse as being potentially navigable (N) or potentially unnavigable (U) based on the possibility of traveling the stream with a vessel. The “Field Call” channelled watercourse classifications in the above table are based on Table 1 of the OGRs at the time, and during the conditions, when layout was conducted.

Planning Unit 081074

Access Map



1:250000



Alberta-Pacific
Forest Industries Inc.



5. Non Timber Values

Public Involvement

Copies of this harvest plan are available for viewing on the Alberta-Pacific website at www.alpac.ca.

The Public Involvement for this plan was completed during the previous year's GDP review meetings.

No concerns have been identified through the public involvement process to date.

Aboriginal Consultation

The Aboriginal Consultation for this plan was completed during the previous year's GDP review meetings.

No concerns have been identified through the Aboriginal Consultation process to date.

Trappers

The holders of the following Registered Fur Management Areas (RFMA) have been contacted regarding harvesting activities within Planning Unit 081074 and their concerns have been noted below:

- 0629
- 1267
- 2675

No concerns have been identified through the Aboriginal Consultation process to date.

Guides and Outfitters

The holders of the following permits within Wildlife Management Units (WMU) 512, 519 and 529 have been notified of Alberta-Pacific's harvest plans within Planning Unit 081074 and their concerns have been noted below:

- | | | | | | |
|--------|--------|--------|--------|--------|--------|
| - 0025 | - 0429 | - 0541 | - 0818 | - 0960 | - 1160 |
| - 0227 | - 0431 | - 0709 | - 0858 | - 1006 | |
| - 0260 | - 0446 | - 0732 | - 0861 | - 1023 | |
| - 0344 | - 0447 | - 0740 | - 0913 | - 1034 | |
| - 0401 | - 0483 | - 0753 | - 0923 | - 1124 | |

No concerns have been identified through the Guide and Outfitter Consultation process to date.

Forest Recreation Groups

There are currently no active forest recreation groups with interests within this planning unit.

Historical Resources

No known historical resource sites are located within this unit. Lands on which historical resource sites are likely to occur will be checked prior to commencement of operations.

Forest Aesthetics

No concerns have been indentified.

Land Use

As per a Land Status Automated System (LSAS) land standing report dated March 15, 2016, there are currently no dispositions within this planning unit that restrict harvesting timber.

The following dispositions have been reviewed and contain no restrictions for timber removal at this time and do not affect the harvest design: PNT 070289 and CNT930387

Permanent Sample Plots (PSPs) are located in planning unit 081074. Any plots that fell within the blocks scheduled for removal have been removed from the harvest design.

Wildlife

This planning unit is within Caribou Range. Operations will adhere to the Alberta-Pacific Caribou Protection Plan submitted annually in the fall.

Portions of the planning unit are within a key Wildlife and Biodiversity Zone. Operations will adhere to section 7.7.5 of the OGRs.

In Section 18 of Twp. 081-07-4 some areas of concentrated terrestrial lichen were identified during layout and were removed from the harvest design.

All known sensitive wildlife sites have been buffered according to section 7.7.6.2 of the OGRs. These buffers have been placed into retention areas (RAs).

The following blocks have been buffered according to section 7.1.1 of the OGRs:

08106419461

08107433651

Block Design

Access and Access Management

Existing access has been utilized where possible to minimize the clearing of new RoW.

The following policies have been implemented to mitigate access management concerns:

- Temporary road systems will be closed as soon as possible after the harvesting, hauling, and silviculture activities have been completed.

The following access control practices will also be implemented:

- Road systems will be signed as “Temporary Access - Logging in Progress.” If a significant delay occurs between harvesting and hauling, temporary access controls on roads will be utilized to restrict access by motorized vehicles. These controls may include the placement of logs on the road, snow berms, and/or removal of creek crossings.
- Slash rollback at strategic points (such as at the ends of the block or at the junction of the temporary road and permanent road) will be completed as soon as possible after logging to discourage access by all terrain or four wheel drive vehicles.

Since the planning unit falls within a Caribou Range, the timing of operations will be completed as per the Alberta-Pacific Caribou Protection Plan.

Since a portion of this planning unit falls within a key Wildlife and Biodiversity Zone, harvest and haul activities within in the zone are to be completed by January 15th as per the OGRs.

6. Spatial Harvest Sequence Summary

The table below summarizes the variance (in area) from the SHS, for Alberta-Pacific harvesting.

The variance exceeds the 20% allowable by cover type for acceptance as per the OGRs.

The primary cause for the deciduous cover type variance is steep terrain along channelled watercourses. Effort has been made to minimize variance wherever feasible.

The primary cause for the White Spruce cover type variance is buffers.

The primary cause for the Black Spruce cover type variance is buffers and operational concerns.

The primary cause for the Jack Pine cover type variance is stands that did not meet the conifer utilization standards.

The harvest area (ha) exceeds the SHS (ha) by cover type for this planning unit. Within this planning unit 752.3 ha of reportable stands not in the current SHS have been added. The additions will make the area more operationally feasible and avoid another entry into the area. To offset these additions there is 276.1 ha of deletions and 476.2 ha of deferrals from the SHS. Defferals for this plan are in the northwest portion of Twp. 084-07-4.

SHS Tracking

SHS Tracking	Decid. Cover Type	Sw Cover Type	Sb Cover Type	Pj Cover Type	Total Cover Type
Total SHS in Planning Unit	1,979.7	196.9	24.5	1,004.5	3,205.6
FHP SHS Harvest ha.	1,076.3	95.2	3.8	454.4	1,629.7
Deleted SHS ha. (reportable)	276.1	73.5	16.5	467.4	833.5
Deferred SHS ha. (reportable)	476.2	0.0	0.0	0.0	476.2
Variance % ⁽¹⁾ (reportable)	38.0%	37.3%	67.3%	46.5%	40.9%
Addition ha. (reportable)	752.3	22.4	0.0	44.5	819.2
Bypassed ha.	0.0	0.0	0.0	0.0	0.0
Total Harvest ha. ⁽²⁾	1,828.6	117.6	3.8	498.9	2,448.9
SHS Variance ha. (unreportable) ⁽³⁾	151.1	28.2	4.2	82.8	266.3
Additions ha. (unreportable) ⁽⁴⁾	120.0	17.4	58.7	41.3	237.4

(1) Variance % is the reportable Deleted and Deferred SHS ha. expressed as a percentage of the Total SHS in the Planning Unit.

(2) Total Harvest ha. is the sum of FHP SHS Harvest ha. and Additions ha. (reportable).

(3) SHS Variance ha. (unreportable) are the deletions and deferrals from the SHS that are less than 2.0 ha. in size.

(4) Additions ha. (unreportable) are the additions to the FHP design that are less than 2.0 ha. in size.

7. Silviculture Information

The following table outlines the initial silviculture declarations for FHP blocks within Planning Unit 081074. Cover group balanced declarations will be submitted post harvest.

Alberta-Pacific Silviculture Declarations

Source Id	Opening Num	Area (ha)	Std_ Mod	Open_ Desig	Species_ Gr	Silv_ Harv
08007434281	4070803428	15.4	C	CC	PN	CC
08007434661	4070803466	42.9	D	PC	DE	UP
08007435281	4070803528	48.2	D	PC	DE	UP
08106405731	4060810573	6.3	C	CC	PN	CC
08106406431	4060810643	23.9	C	CC	PN	CC
08106407391	4060810739	9.7	D	CC	DE	CC
08106407441	4060810744	3.2	C	CC	SW	CC
08106409331	4060810933	1.7	D	CC	DE	CC

Alberta-Pacific Silviculture Declarations (Cont.)

Source Id	Opening Num	Area (ha)	Std_ Mod	Open_ Desig	Species_ Gr	Silv_ Harv
08106416261	4060811626	12.6	D	PC	DE	UP
08106416321	4060811632	15.5	D	PC	DE	UP
08106418321	4060811832	5.4	D	CC	DE	CC
08106419111	4060811911	7.0	D	CC	DE	CC
08106419331	4060811933	13.0	D	CC	DE	CC
08106419431	4060811943	4.5	D	CC	DE	CC
08106419461	4060811946	6.9	D	CC	DE	CC
08106420431	4060812043	2.3	C	CC	SW	CC
08106420621	4060812062	7.6	D	PC	DE	CC
08106420741	4060812074	1.3	C	CC	MX	CC
08106420851	4060812085	2.5	D	CC	DE	CC
08106421211	4060812121	6.3	D	CC	DE	CC
08106421311	4060812131	5.1	D	CC	DE	CC
08106421381	4060812138	33.6	D	PC	DE	UP
08106430371	4060813037	56.1	D	AV	DE	CC
08107402271	4070810227	4.7	C	CC	PN	CC
08107402281	4070810228	3.8	D	CC	DE	CC
08107402551	4070810255	18.6	D	CC	DE	CC
08107402911	4070810291	16.1	D	PC	DE	UP
08107403631	4070810363	36.1	D	CC	DE	CC
08107403641	4070810364	3.6	D	CC	DE	CC
08107403661	4070810366	3.5	D	CC	DE	CC
08107403831	4070810383	4.6	C	CC	PN	CC
08107403881	4070810388	9.5	C	CC	PN	CC
08107404141	4070810414	2.0	D	CC	DE	CC
08107404241	4070810424	6.7	C	CC	PN	CC
08107404311	4070810431	28.0	D	CC	DE	CC
08107404371	4070810437	7.7	D	CC	DE	CC
08107404631	4070810463	2.8	D	CC	DE	CC
08107404641	4070810464	5.4	D	CC	DE	CC
08107404681	4070810468	31.2	D	CC	DE	CC
08107404731	4070810473	13.5	C	CC	SW	CC
08107404741	4070810474	5.3	C	CC	SW	CC
08107404821	4070810482	6.3	D	PC	DE	UP
08107404841	4070810484	5.0	D	CC	DE	CC
08107405411	4070810541	31.1	D	PC	DE	UP
08107405461	4070810546	5.4	C	CC	PN	CC
08107405631	4070810563	7.0	C	CC	PN	CC
08107405671	4070810567	2.2	C	CC	SB	CC
08107405861	4070810586	2.2	C	CC	MX	CC

Alberta-Pacific Silviculture Declarations (Cont.)

Source Id	Opening Num	Area (ha)	Std_ Mod	Open_ Desig	Species_ Gr	Silv_ Harv
08107405881	4070810588	13.9	D	CC	DE	CC
08107406281	4070810628	2.5	D	CC	DE	CC
08107406451	4070810645	2.2	C	CC	PN	CC
08107406641	4070810664	19.9	D	CC	DE	CC
08107406711	4070810671	32.2	C	CC	PN	CC
08107407291	4070810729	8.0	D	CC	DE	CC
08107407361	4070810736	19.7	D	CC	DE	CC
08107407491	4070810749	6.0	D	CC	DE	CC
08107407791	4070810779	6.5	D	CC	DE	CC
08107407871	4070810787	2.0	D	CC	DE	CC
08107408391	4070810839	16.3	D	CC	DE	CC
08107408671	4070810867	8.2	D	CC	DE	CC
08107408781	4070810878	5.6	D	CC	DE	CC
08107408791	4070810879	24.3	D	CC	DE	CC
08107408821	4070810882	3.8	D	PC	DE	UP
08107408841	4070810884	10.4	D	CC	DE	CC
08107409131	4070810913	2.6	D	CC	DE	CC
08107409171	4070810917	3.5	D	CC	DE	CC
08107409341	4070810934	12.3	D	CC	DE	CC
08107409391	4070810939	21.1	D	PC	DE	UP
08107409731	4070810973	27.9	D	CC	DE	CC
08107409861	4070810986	3.4	C	CC	PN	CC
08107410221	4070811022	3.1	D	CC	DE	CC
08107410331	4070811033	3.1	C	CC	PN	CC
08107410411	4070811041	2.5	D	CC	DE	CC
08107410461	4070811046	6.1	D	CC	DE	CC
08107410471	4070811047	1.9	C	CC	PN	CC
08107410521	4070811052	4.2	D	CC	DE	CC
08107410621	4070811062	1.3	C	CC	MX	CC
08107410751	4070811075	3.5	C	CC	PN	CC
08107411241	4070811124	33.1	D	PC	DE	UP
08107411961	4070811196	3.4	D	CC	DE	CC
08107412231	4070811223	7.6	D	CC	DE	CC
08107412421	4070811242	10.2	D	AV	DE	CC
08107412441	4070811244	23.6	D	AV	DE	CC
08107412861	4070811286	14.0	D	CC	DE	CC
08107415281	4070811528	11.6	D	CC	DE	CC
08107415651	4070811565	4.4	D	CC	DE	CC
08107415881	4070811588	12.7	C	CC	MX	CC
08107416571	4070811657	16.2	D	CC	DE	CC

Alberta-Pacific Silviculture Declarations (Cont.)

Source Id	Opening Num	Area (ha)	Std_ Mod	Open_ Desig	Species_ Gr	Silv_ Harv
08107416791	4070811679	19.1	D	CC	DE	CC
08107416811	4070811681	21.7	D	CC	DE	CC
08107417281	4070811728	31.9	C	CC	PN	CC
08107417331	4070811733	19.4	D	CC	DE	CC
08107417571	4070811757	24.5	D	CC	DE	CC
08107418291	4070811829	7.6	D	CC	DE	CC
08107418481	4070811848	54.1	C	CC	PN	CC
08107418841	4070811884	10.8	D	CC	DE	CC
08107419261	4070811926	19.7	C	CC	PN	CC
08107419281	4070811928	10.5	C	CC	PN	CC
08107419321	4070811932	18.9	C	CC	PN	CC
08107419391	4070811939	3.4	D	CC	DE	CC
08107419551	4070811955	11.1	C	CC	PN	CC
08107419621	4070811962	3.3	D	CC	DE	CC
08107419641	4070811964	6.0	D	CC	DE	CC
08107419741	4070811974	13.9	C	CC	PN	CC
08107420241	4070812024	21.1	C	CC	PN	CC
08107420281	4070812028	8.8	D	CC	DE	CC
08107420361	4070812036	4.5	D	CC	DE	CC
08107420461	4070812046	3.4	C	CC	PN	CC
08107420731	4070812073	5.4	D	CC	DE	CC
08107420841	4070812084	27.1	D	PC	DE	UP
08107421241	4070812124	12.8	D	CC	DE	CC
08107421281	4070812128	8.4	D	CC	DE	CC
08107421461	4070812146	11.1	D	CC	DE	CC
08107421641	4070812164	6.7	D	CC	DE	CC
08107421881	4070812188	26.1	D	CC	DE	CC
08107422221	4070812222	1.2	D	CC	DE	CC
08107422331	4070812233	2.2	D	CC	DE	CC
08107422371	4070812237	10.0	D	CC	DE	CC
08107422421	4070812242	2.9	D	CC	DE	CC
08107422461	4070812246	3.5	D	CC	DE	CC
08107422481	4070812248	8.3	D	CC	DE	CC
08107422681	4070812268	7.8	D	CC	DE	CC
08107422841	4070812284	3.0	C	CC	PN	CC
08107422871	4070812287	3.3	D	CC	DE	CC
08107423661	4070812366	9.4	D	CC	DE	CC
08107423681	4070812368	41.9	D	PC	DE	UP
08107423731	4070812373	4.8	D	CC	DE	CC
08107423821	4070812382	4.5	D	CC	DE	CC

Alberta-Pacific Silviculture Declarations (Cont.)

Source Id	Opening Num	Area (ha)	Std_ Mod	Open_ Desig	Species_ Gr	Silv_ Harv
08107423841	4070812384	1.7	D	CC	DE	CC
08107423851	4070812385	1.2	D	CC	DE	CC
08107423991	4070812399	5.8	D	CC	DE	CC
08107424171	4070812417	6.3	D	CC	DE	CC
08107425191	4070812519	3.9	D	CC	MX	CC
08107425361	4070812536	4.4	D	CC	DE	CC
08107428371	4070812837	2.3	D	CC	DE	CC
08107428671	4070812867	3.5	D	CC	DE	CC
08107429311	4070812931	10.8	D	CC	DE	CC
08107429441	4070812944	2.3	D	CC	DE	CC
08107429511	4070812951	16.0	D	CC	DE	CC
08107429671	4070812967	2.0	C	CC	PN	CC
08107430441	4070813044	4.2	D	CC	DE	CC
08107430761	4070813076	44.4	D	CC	DE	CC
08107431221	4070813122	9.8	C	CC	PN	CC
08107431541	4070813154	4.4	D	CC	DE	CC
08107431611	4070813161	3.1	D	CC	DE	CC
08107431741	4070813174	7.9	D	CC	DE	CC
08107432821	4070813282	15.6	D	CC	DE	CC
08107432871	4070813287	5.6	D	CC	DE	CC
08107433221	4070813322	21.4	D	CC	DE	CC
08107433361	4070813336	2.9	D	CC	DE	CC
08107433651	4070813365	4.2	D	CC	DE	CC
08107433671	4070813367	2.0	D	CC	DE	CC
08107434371	4070813437	3.1	D	CC	DE	CC
08107434461	4070813446	13.6	D	CC	DE	CC
08108401881	4080810188	5.9	D	CC	DE	CC
08108401891	4080810189	10.5	D	CC	DE	CC
08108401961	4080810196	7.7	C	CC	PN	CC
08108412561	4080811256	0.6	D	CC	MX	CC
08108412711	4080811271	8.8	C	CC	PN	CC
08108412761	4080811276	41.6	C	CC	PN	CC
08108413241	4080811324	2.9	C	CC	PN	CC
08108413371	4080811337	3.7	C	CC	PN	CC
08108413411	4080811341	69.9	D	CC	DE	CC
08108413441	4080811344	13.3	C	CC	PN	CC
08108413461	4080811346	2.8	D	CC	MX	CC
08108413941	4080811394	9.2	C	CC	PN	CC
08108423861	4080812386	16.0	D	CC	DE	CC
08108423871	4080812387	8.8	D	CC	DE	CC

Alberta-Pacific Silviculture Declarations (Cont.)

Source Id	Opening Num	Area (ha)	Std_ Mod	Open_ Desig	Species_ Gr	Silv_ Harv
08108424331	4080812433	6.1	C	CC	PN	CC
08108424361	4080812436	3.5	D	CC	DE	CC
08108424371	4080812437	2.9	D	CC	MX	CC
08108424441	4080812444	4.0	D	CC	DE	CC
08108424561	4080812456	2.3	C	CC	PN	CC
08108424731	4080812473	50.6	D	CC	DE	CC
08108424841	4080812484	6.3	C	CC	PN	CC
08108425311	4080812531	36.9	C	CC	PN	CC
08108426281	4080812628	2.6	C	CC	PN	CC
08108426821	4080812682	11.1	D	CC	DE	CC
08108426911	4080812691	2.6	C	CC	PN	CC
08108426931	4080812693	2.1	C	CC	PN	CC
08108435331	4080813533	4.5	D	CC	MX	CC
8108436621	4080813662	43.4	C	CC	PN	CC

In the above table, the codes for “Std_Mod”, “Open_Type”, “Species_Gr” and “Silv_Harv” are as per the Alberta Regeneration Information System (ARIS) domain codes. “AV” under “Open_Desig” is not an ARIS code but is used internally for the tracking of understorey avoidance blocks. If a block contains adequate amounts of Balsam Fir, so that fir is an acceptable coniferous regeneration species, a code of FA is used in the “Species_Gr”.

All deciduous blocks will be Leave for Natural (LFN). All coniferous blocks will be treated as per appendix 4 of the Forest Management Plan (FMP).

8. OGRs Variances

Blocks

The variance exceeds the 20% allowable by cover type for acceptance as per the OGRs.

The primary cause for the deciduous cover type variance is steep terrain along channelled watercourses. Effort has been made to minimize variance wherever feasible.

The primary cause for the White Spruce cover type variance is buffers.

The primary cause for the Black Spruce cover type variance is buffers and operational concerns.

The primary cause for the Jack Pine cover type variance is stands that did not meet the conifer utilization standards.

The following table identifies blocks greater than 7.0 ha that may exceed 5% road disturbance once turnabouts are constructed.

Road Percent

Source Id	% Road Class	Comments
08007434281	12	Narrow block and/or irregular shaped block.
08007434661	5	Extra road required for understorey concerns.
08007435281	6	Extra decking space due to large timber and/or high volume.
08106407391	5	Narrow block and/or irregular shaped block.
08106416261	5	Extra road required for understorey concerns.
08106416321	7	Extra road required for understorey concerns.
08106419331	5	Extra road required; Access to other blocks.
08106420621	7	Extra road required; Access to other blocks.
08107402551	6	Extra road required; Access to other blocks.
08107403631	8	Extra decking space due to large timber and/or high volume.
08107403881	6	Extra road required; Access to other blocks.
08107404311	5	Extra road required due to rugged terrain.
08107404371	6	Narrow block and/or irregular shaped block.
08107404681	7	Narrow block and/or irregular shaped block.
08107404731	7	Narrow block and/or irregular shaped block.
08107405631	9	Extra road required; Access to other blocks.
08107405881	7	Extra road required; Access to other blocks.
08107406711	5	Extra road required; Access to other blocks.
08107407291	6	Narrow block and/or irregular shaped block.
08107408391	10	Narrow block and/or irregular shaped block.
08107408671	9	Extra road required; Access to other blocks.
08107408841	8	Extra road required due to rugged terrain.
08107409341	8	Narrow block and/or irregular shaped block.
08107409731	5	Extra road required; Access to other blocks.
08107412231	7	Narrow block and/or irregular shaped block.
08107412441	7	Extra road required due to rugged terrain.
08107412861	6	Extra road required; Access to other blocks.
08107415281	6	Narrow block and/or irregular shaped block.
08107415881	8	Narrow block and/or irregular shaped block.
08107416571	5	Extra road required due to rugged terrain.
08107417281	6	Extra road required; Access to other blocks.
08107417331	8	Extra road required; Access to other blocks.
08107417571	7	Narrow block and/or irregular shaped block.
08107418291	6	Narrow block and/or irregular shaped block.
08107418481	5	Extra road required; Access to other blocks.
08107418841	7	Extra road required; Access to other blocks.
08107419261	5	Extra road required; Access to other blocks.
08107419321	5	Extra road required; Access to other blocks.
08107419551	6	Extra road required; Access to other blocks.
08107420241	5	Narrow block and/or irregular shaped block.
08107420281	5	Narrow block and/or irregular shaped block.
08107421241	5	Extra road required; Access to other blocks.
08107421281	8	Narrow block and/or irregular shaped block.
08107421461	8	Extra road required due to rugged terrain.

Road Percent (Cont.)

Source Id	% Road Class	Comments
08107421641	7	Extra road required; Access to other blocks.
08107422371	5	Narrow block and/or irregular shaped block.
08107422481	5	Narrow block and/or irregular shaped block.
08107422681	7	Narrow block and/or irregular shaped block.
08107423661	8	Extra road required; Access to other blocks.
08107429311	7	Extra road required; Access to other blocks.
08107429511	9	Narrow block and/or irregular shaped block.
08107430761	5	Extra road required; Access to other blocks.
08107431221	5	Extra road required; Access to other blocks.
08107431741	6	Narrow block and/or irregular shaped block.
08107432821	5	Extra road required; Access to other blocks.
08107433221	7	Extra road required due to rugged terrain.
08107434461	8	Narrow block and/or irregular shaped block.
08108401891	8	Narrow block and/or irregular shaped block.
08108401961	5	Narrow block and/or irregular shaped block.
08108412711	5	Extra road required; Access to other blocks.
08108413411	5	Extra road required; Access to other blocks.
08108413441	8	Narrow block and/or irregular shaped block.
08108413941	5	Extra road required; Access to other blocks.
08108423861	7	Extra road required; Access to other blocks.
08108423871	8	Narrow block and/or irregular shaped block.
08108425311	5	Extra road required; Access to other blocks.
08108426821	11	Narrow block and/or irregular shaped block.

The percent road class values have been achieved by rounding the road disturbance percent to the nearest whole number.

The following blocks contain ≥ 600 stems/ha of White Spruce understorey but are too narrow or small for understorey protection methods, and will not have the understorey protected by avoidance or high intensity understorey protection:

08106421311	08107412231	08107422461
08107402281	08107420731	08107423661
08107404841	08107422371	08107423731

No understorey assessments will be submitted for these blocks.

Block 08106430371 contains 2 ha clumps of ≥ 600 stems/ha of White Spruce understorey at grid location 3034 of Twp. 081-06-4. Due to issues with terrain this area will be protected by avoidance methods.

Block 08107412441 is comprised of two islands and contains 2 ha clumps of ≥ 600 stems/ha of White Spruce understorey at grid location 1254 of Twp. 081-07-4. Due to the size and shape of the islands this block will be protected by avoidance protection methods.

Roads

Road Comments

Road No.	Class	Comments
11241	4W	This road is within 100m of a large permanent stream that is fish bearing.
14681	4S	This road is within 200m of a Lake.
18481	4W	This road is within 100m of a large permanent stream
19321	4W	This road is within 100m of a large permanent stream that is fish bearing.
23821	4W	Contains road that is within 200m of a Lake at grid location 2382.
23731	4S	Contains road that is within 200m of a Lake at grid location 2372