

Planning Unit 071204 Forest Harvest Plan

1. Introduction

This Forest Harvest Plan (FHP) for Planning Unit 071204 includes maps and reports that clearly show and document the planned harvest area boundaries, roads and water crossings within the planning unit.

This plan is being submitted for appraisal, for a 5-year FHP approval under the 2015-16 Alberta-Pacific Forest Industries Inc. (Alberta-Pacific) Annual Operating Plan (AOP).

This FHP has been discussed with Alberta Environment and Sustainable Resource Development (ESRD).

2. Planning Unit Specific Comments

Planning Unit 071204 is located southeast of the community of Calling Lake.

The planning unit is located in Forest Management Unit (FMU) L02. Alberta-Pacific has rights to D as deciduous landbase.

The harvest design utilizes a combination of the 2006 Spatial Harvest Sequence (SHS) and non SHS stands. The coniferous design (coniferous SHS) is shown for landbase integration purposes. Detailed coniferous block and road design, variances to the coniferous SHS and coniferous profile reporting will be completed by the coniferous operator during their planning process. The affected coniferous operators have reviewed and agreed to the deciduous design.

Blocks 07120417671, 07120417861, 07120417891 and 07120420551 were previously submitted in conjunction with Bobocel's disposition CTL L020084. Blocks 07120417861 and 07120417891 were harvested in 2013. Blocks and roads for blocks 07120417671 and 07120420551 have been redesigned and are being resubmitted for this submission.

Integration

Bobocel Lumber Ltd. (Bobocel) holds active timber disposition CTL L020084 within portions of this Planning Unit.

Alberta Pacific received Bobocel's agreement for this plan on March 2, 2015.

Alberta Pacific received Vanderwell Contractors (1971) Ltd. agreement for this plan on March 4, 2015.

Watershed

The Calling River has been surveyed as fish bearing and navigable.

Blocks within this unit are within 500 metres upstream of a Class B waterbody and have been buffered accordingly. See section 3 for a listing of blocks affected.

All unsurveyed creeks have been buffered and crossed as though they were fish bearing.

Stand Structure

An average of 5% of the merchantable volume will be left in stand structure over the FMU. The structure will be left as layout patches, and as single trees and small clumps of timber at the operators' discretion.

Debris Management

One or more of the following debris management strategies apply for blocks within this planning unit:

- Methods described in the Forest and Prairie Protection Act and Regulations, and/or
- Thinly spread slash throughout the block, and/or
- Stump side processing.

Blocks within FireSmart Community Zones will not utilize the retention of debris piles.

The deciduous utilization standard will be 15/10. The coniferous utilization standard will be 15/11.

Design Comments

During the layout phase of this operation, Alberta-Pacific looked for signs of insect or disease infestations but none were found.

3. Block Information

The following table summarizes the volumes within Alberta-Pacific's FHP blocks.

Landbase Volume Summary

Company	Area (ha)	Decid (m3)	Conif (m3)	Inc Conif (m3)	Total (m3)
Alberta-Pacific	298	56,083	1,899	4,484	62,466

Alberta-Pacific FHP block 07120417671 will have the coniferous volume hauled as quota (CTL) chargeable.

Alberta-Pacific Deciduous First Entry Block Listing

(Values Affected by Rounding)

Source Id	Harvest Season	Conif Charge	Detail Plan	Area (ha)	Decid (m3)	Conif (m3)	Inc Conif (m3)	Total (m3)
07120417341	NF	INC	U	22	2,744	0	321	3,065
07120417671	NF	CTL	U	28	5,518	441	1,418	7,377
<i>07120420551</i>	<i>NF</i>	<i>INC</i>	<i>U</i>	<i>137</i>	<i>26,862</i>	<i>1,458</i>	<i>1,604</i>	<i>29,924</i>
<i>07120421471</i>	<i>NF</i>	<i>INC</i>	<i>U</i>	<i>16</i>	<i>2,903</i>	<i>0</i>	<i>128</i>	<i>3,031</i>
07120428231	T	INC		5	1,076	0	269	1,345
07120428441	T	INC		18	4,119	0	136	4,255
07120429371	T	INC		10	1,650	0	52	1,702
07120429481	T	INC		10	2,352	0	75	2,427
07120429741	NF	INC	U	52	8,859	0	481	9,340
Total				298	56,083	1,899	4,484	62,466

The two italicised blocks in the above table were submitted in conjunction with Bobocel's disposition CTL L020084. Their blocks and roads have been redesigned for this submission.

Blocks 07120420551 and 07120421471 contain coniferous underplanting trials. These blocks will be harvested as per a detailed block form.

The conifer within block 07120417671 has been assigned White Spruce cover type for coniferous volume chargeability.

Alberta-Pacific Harvested Block Listing

(Values Affected by Rounding)

Source Id	Harvest Season	Conif Charge	Detail Plan	Area (ha)	Decid (m3)	Conif (m3)	Inc Conif (m3)	Total (m3)
07120417861	NF	INC		5	634	226	428	1,288
07120417891	NF	INC		46	7,530	3,169	1,732	12,431
Total				50	8,164	3,395	2,160	13,719

4. Access and Road Information

Landuse agreements will be in place prior to use of any third party dispositions being used.

Planning Unit Temporary Road Information

Existing access has been utilized where possible to minimize the clearing of new Right of Way (RoW).

New access and channelled watercourse crossings will be reclaimed in order to restrict access. All terrain vehicle (ATV) access may be left to facilitate silviculture activities.

New access and channelled watercourse crossings will be reclaimed as per Section 11.3.4 of the OGRs. Road reclamation and abandonment details are listed in the AOP when the blocks and roads are scheduled.

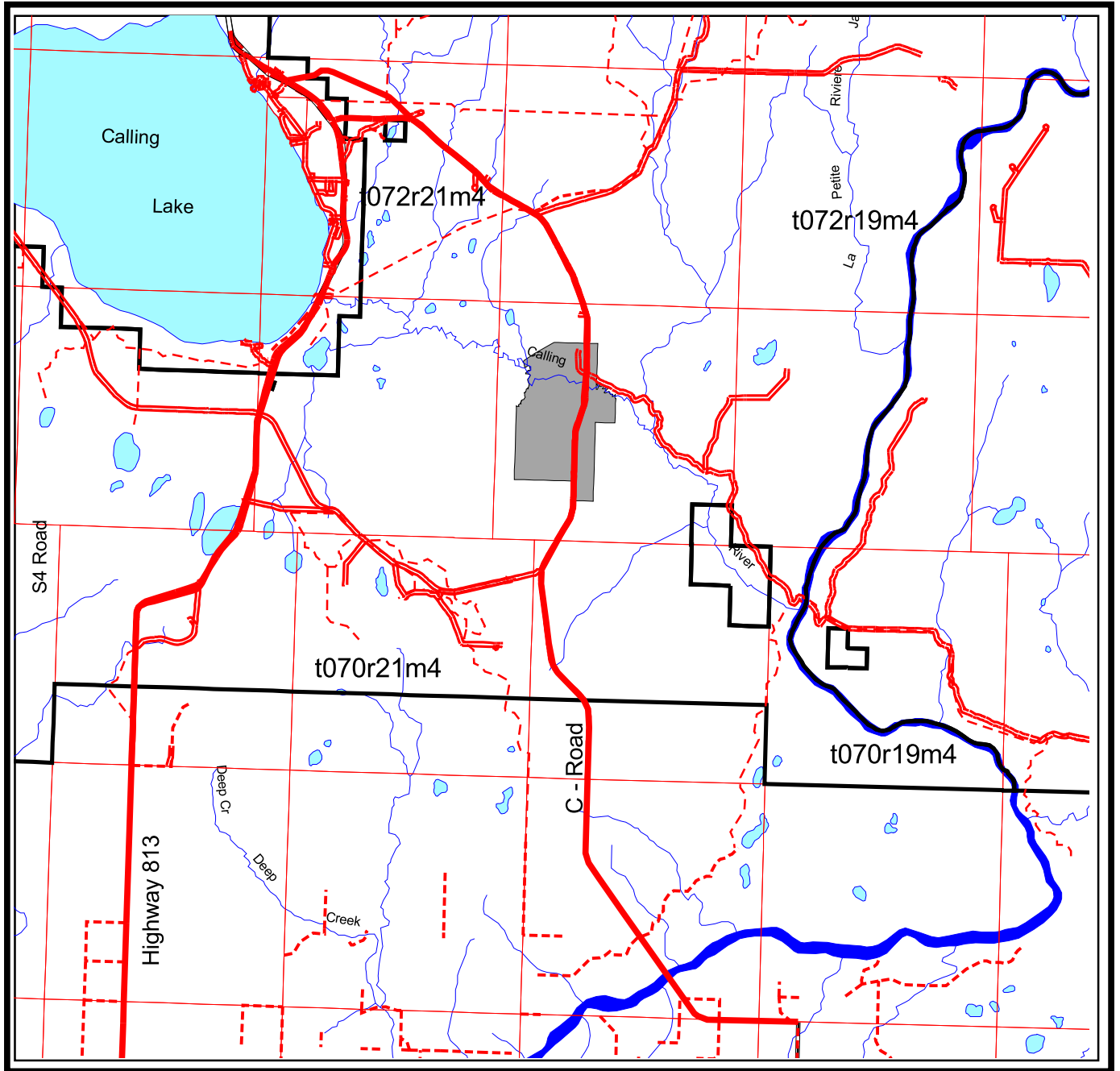
Main Access and Crossings

Road No.	Class	Length (Km)	Construction Season	Crossing Location	Field Call	Navigability
17341	4S	0.01	Non-Frozen	1754		
17671	4S	1.00	Non-Frozen			
17861	4S	0.20	Non-Frozen	1777		
17891	4S	0.27	Non-Frozen	1787		
20551	4S	2.94	Non-Frozen	2024 2028		
21471	4S	0.07	Non-Frozen			
28441	4S	0.85	Non-Frozen	2846		
29371	4S	0.02	Non-Frozen	2948	E	U
29481	4S	0.87	Non-Frozen			
29741	4S	1.57	Non-Frozen	2954		
Total Class 4W:		0.00				
Total Class 4S:		7.80				
Total Class 4P:		0.00				

In the above table, possible “Field Call” channelled watercourse classifications are ephemeral (E), intermittent (I), transitional (T), small permanent (SP), large permanent (LP), lake < 4 ha (SL), lake ≥ 4 ha (LL) beaver pond (B), spring (S), saturated soils (SS)

or no channelled watercourse (NW). The “Navigability” rating identifies channelled watercourse as being potentially navigable (N) or potentially unnavigable (U) based on the possibility of traveling the stream with a vessel. The “Field Call” channelled watercourse classifications in the above table are based on Table 1 of the OGRs at the time, and during the conditions, when layout was conducted.

Planning Unit 071204 Access Map



1:250000



Alberta-Pacific
Forest Industries Inc.



5. Non Timber Values

Public Involvement

Copies of this harvest plan are available for viewing at the Athabasca, Fort McMurray and Lac La Biche libraries, TimberNorth-Athabasca, the Alberta-Pacific Wabasca field office and the Alberta-Pacific mill site.

The Public Involvement for this plan was completed during the previous year's GDP review meetings.

No concerns have been identified through the public involvement process to date.

Aboriginal Consultation

The Aboriginal Consultation for this plan was completed during the previous year's GDP review meetings.

No concerns have been identified through the Aboriginal Consultation process to date.

Trappers

The holders of the following Registered Fur Management Areas (RFMA) have been contacted regarding harvesting activities within Planning Unit 071204:

- 1302
- 2194

No concerns have been identified through the Trapper Consultation process to date.

Guides and Outfitters

The holders of the following permits within Wildlife Management Units (WMU) 509 and 516 have been notified of Alberta-Pacific's harvest plans within Planning Unit 071204:

- 0239 - 0554 - 0869 - 1034
- 0260 - 0695 - 0910
- 0261 - 0753 - 0913
- 0480 - 0798 - 0988

No concerns have been identified through the Guide and Outfitter Consultation process to date.

Forest Recreation Groups

There are currently no active forest recreation groups with interests within this planning unit.

Historical Resources

Known historical resource sites have been addressed during the design of this plan. Lands on which historical resource sites are likely to occur will be checked prior to commencement of operations or post harvest.

Forest Aesthetics

No concerns have been identified.

Land Use

As per a Land Status Automated System (LSAS) land standing report dated October 30, 2014, there are currently no dispositions within this planning unit that restrict harvesting timber.

The following disposition has been removed from the harvest design: ISP 950053.

The following dispositions have been reviewed and contain no restrictions for timber removal at this time and do not affect the harvest design:

DRS 920009	CNT 090005
PNT 040194	CTL L020084

Wildlife

This planning unit is not within a Caribou Range. Portions of the planning unit are within a key Wildlife and Biodiversity Zone. Operations will adhere to the Alberta-Pacific wildlife plan submitted annually in the fall.

No areas of concentrated terrestrial lichens were identified during layout.

Block Design

Access and Access Management

Existing access has been utilized where possible to minimize the clearing of new RoW.

The following policy has been implemented to mitigate access management concerns:

- Temporary road systems will be closed as soon as possible after the harvesting, hauling, and silviculture activities have been completed.

The following access control practices will also be implemented:

- If a significant delay occurs between harvesting and hauling, temporary access controls on roads will be utilized to restrict access by motorized vehicles. These controls may include the placement of logs on the road, snow berms, and/or removal of creek crossings

- Slash rollback at strategic points (such as at the ends of the block or at the junction of the temporary road and permanent road) will be completed as soon as possible after logging to discourage access by all terrain or four wheel drive vehicles.

Since a portion of this planning unit falls within a key Wildlife and Biodiversity Zone, harvest and haul activities within the zone are to be completed by January 15th as per the AOP.

6. Integration with Affected Forest Companies

Bobocel Block Listing (Values Affected by Rounding)

Block Id	Harvest Season	Conif Charge	Detail Plan	Area (ha)	Decid (m3)	Conif (m3)	Inc Conif (m3)	Total (m3)
07120409154	NF	CTL		36	2,558	5,800	0	8,358
07120417414	NF	CTL		200	16,991	39,349	783	57,123
07120420644	NF	CTL		113	13,680	17,696	148	31,524
07120421234	NF	CTL		17	704	2,264	0	2,968
07120421324	NF	CTL		4	77	693	0	770
Total				370	34,010	65,802	931	100,743

7. Spatial Harvest Sequence Summary

The table below summarizes the variance (in area) from the SHS, for Alberta-Pacific harvesting. The variance exceeds the 20% allowable for acceptance under the OGRs. The primary reason for this is the addition of timber to operationalize the plan. The Total Harvest area (ha) exceeds the Total SHS in Planning Unit.

SHS Tracking

SHS Tracking	Decid. Cover Type	Sw Cover Type	Sb Cover Type	Pj Cover Type	Total Cover Type
Total SHS in Planning Unit	335.6	0.0	0.0	0.0	335.6
FHP SHS Harvest ha.	203.4	0.0	0.0	0.0	203.4
Deleted SHS ha. (reportable)	18.6	0.0	0.0	0.0	18.6
Deferred SHS ha. (reportable)	99.2	0.0	0.0	0.0	99.2
Variance % ⁽¹⁾ (reportable)	35.1	0.0	0.0	0.0	35.1
Addition ha.	135.2	3.9	0.0	0.0	135.2
Bypassed ha.	0.0	0.0	0.0	0.0	0.0
Total Harvest ha. ⁽²⁾	338.5	0.0	0.0	0.0	338.5

(1) Variance % is the Deleted and Deferred SHS ha. expressed as a percentage of the Total SHS in the Planning Unit.

(2) Total Harvest ha. is the sum of FHP SHS Harvest ha. and Additions ha.

8. Silviculture Information

The following table outlines the initial silviculture declarations for FHP blocks within Planning Unit 071204. Cover group balanced declarations will be submitted post harvest.

Alberta-Pacific Silviculture Declarations

Source Id	Area (ha)	Std_Mod	Open_Desig	Species_Gr	Silv_Harv
07120417341	21.6	D	PC	DE	UP
07120417671	28.2	D	PC	DE	UP
07120420551	137.2	D	PC	DE	UP
07120421471	16.0	D	PC	DE	UP
07120428231	5.2	D	CC	DE	CC
07120428441	18.3	D	CC	DE	CC
07120429371	9.7	D	CC	DE	CC
07120429481	9.8	D	CC	DE	CC
07120429741	52.2	D	PC	DE	UP

In the above table, the codes for “Std_Mod”, “Open_Type”, “Species_Gr” and “Silv_Harv” are as per the Alberta Regeneration Information System (ARIS) domain codes. “AV” under “Open_Desig” is not an ARIS code but is used internally for the tracking of understorey avoidance blocks. If a block contains adequate amounts of Balsam Fir, so that fir is an acceptable coniferous regeneration species, a code of FA is used in the “Species_Gr”.

All deciduous blocks will be Leave for Natural (LFN).

9. OGRs Variances

Blocks

The variance exceeds the 20% allowable for acceptance under the OGRs. The Total Harvest area (ha) exceeds the Total SHS in Planning Unit.

SHS Tracking

SHS Tracking	Decid. Cover Type	Sw Cover Type	Sb Cover Type	Pj Cover Type	Total Cover Type
Total SHS in Planning Unit	335.6	0.0	0.0	0.0	335.6
FHP SHS Harvest ha.	203.4	0.0	0.0	0.0	203.4
Deleted SHS ha. (reportable)	18.6	0.0	0.0	0.0	18.6
Deferred SHS ha. (reportable)	99.2	0.0	0.0	0.0	99.2
Variance % ⁽¹⁾ (reportable)	35.1	0.0	0.0	0.0	35.1
Addition ha.	135.2	3.9	0.0	0.0	135.2
Bypassed ha.	0.0	0.0	0.0	0.0	0.0
Total Harvest ha. ⁽²⁾	338.5	0.0	0.0	0.0	338.5

(1) Variance % is the Deleted and Deferred SHS ha. expressed as a percentage of the Total SHS in the Planning Unit.

(2) Total Harvest ha. is the sum of FHP SHS Harvest ha. and Additions ha.

The following table identifies blocks greater than 7.0 ha that may exceed 5 % road disturbance once turnabouts are constructed.

Road Percent

Source Id	% Road Class	Comments
07120428441	5	Narrow block and/or irregular shaped block.
07120429371	6	Narrow block and/or irregular shaped block.
07120429741	6	Narrow block and/or irregular shaped block.

The percent road class values have been achieved by rounding the road disturbance percent to the nearest whole number.

Roads

Roads Close to Watercourses

Road No.	Grid Location	Base Info	Field Call	Distance of Watercourse From Road	Habitat Rating
20551	1998	P	LP	100	SF

The “Distance of Watercourse From Road” is the minimum distance allowed in Table 2 of the OGRs without ESRD approval. The roads listed are within those minimum distances. Please refer to the FHP map and layout block maps for more information.

In the above table, possible “Base Info” watercourse classifications are indefinite (E), intermittent (I), perennial (P), unmapped (UM) , lake < 4 ha (SL) or lake \geq 4 ha (LL). The possible “Field Call” watercourse classifications are intermittent (I), transitional (T), small permanent (SP), large permanent (LP), lake < 4 ha (SL), lake \geq 4 ha (LL). The “Habitat Rating” identifies watercourses surveyed as fish bearing or potentially fish bearing (SF), surveyed as non-fish bearing (SN) or unsurveyed (U). The “Field Call” watercourse classifications in the above table are based on Table 1 of the OGRs at the time, and during the conditions, when layout was conducted.