

Planning Unit 071124 Forest Harvest Plan

1. Introduction

This Forest Harvest Plan (FHP) for Planning Unit 071124 includes maps and reports that clearly show and document the planned harvest area boundaries, roads and water crossings within the planning unit.

This plan is being resubmitted for appraisal, for a 5-year FHP approval under the 2014-15 Alberta-Pacific Forest Industries Inc. (Alberta-Pacific) Annual Operating Plan (AOP) as the previous approval has expired.

2. Planning Unit Specific Comments

Planning Unit 071124 was previously submitted and approved under the 2010 AOP. Two retention areas in the south have been removed from the Harvest Design as they no longer meet the current criteria for retention areas. They have been tracked in the variance section.

Planning Unit 071124 is located northwest of the Heart Lake Indian Reserve.

The planning unit is located in Forest Management Unit (FMU) L1. Alberta-Pacific has rights to D, DC and D(C) as deciduous landbase.

There are no active timber permits or licenses held by other users within this planning unit.

The harvest design utilizes the 2006 Spatial Harvest Sequence (SHS). The plan and SHS were designed to remove second pass timber within the area. The coniferous design (coniferous SHS) is shown for landbase integration purposes.

A coniferous Quota holder within this FMU will submit, in the future, a detailed coniferous block and road design, variances to the coniferous SHS and coniferous profile reporting during their planning process. The affected coniferous operators have reviewed and agreed to the deciduous design.

Watershed

The small permanent streams that run through the northwest and central portions of the planning unit are fish bearing and have been buffered accordingly.

All unsurveyed creeks have been buffered and crossed as though they were fish bearing.

Stand Structure

An average of 5% of the merchantable volume will be left in stand structure over the landscape. The structure will be left as single trees and small clumps of timber at the operators' discretion.

Debris Management

All of the blocks in this unit are outside FireSmart Community Zones as identified by Alberta Environment and Sustainable Resource Development (ESRD). One or more of following debris management strategies apply for blocks within this planning unit:

- Methods described in the Forest and Prairie Protection Act and Regulations, and/or
- Thinly spread slash throughout the block, and/or
- Stump side processing.

The retention of debris piles may also be utilized in addition to the above strategies, as per Forest Protection Directive 2007-02.

The deciduous utilization standard will be 15/10. The coniferous utilization standard will be 15/11.

Design Comments

During the layout phase of this operation, Alberta-Pacific looked for signs of insect or disease infestations. No significant signs were encountered during this phase.

3. Block Information

The following table summarizes the volumes within the Quota blocks and Alberta-Pacific's FHP blocks.

Landbase Volume Summary

Company	Area (ha)	Decid (m3)	Conif (m3)	Inc Conif (m3)	Total (m3)
Quota	536	16,219	67,210	94	83,523
Alberta-Pacific	484	113,584	0	7,663	121,247

Alberta-Pacific Deciduous First Entry Block Listing

(Values Affected by Rounding)

Source Id	Harvest Season	Conif Charge	Detail Plan	Area (ha)	Decid (m3)	Conif (m3)	Inc Conif (m3)	Total (m3)
07112409221	NF	INC		9	1,779	0	84	1,863
07112409281	NF	INC		17	3,672	0	114	3,786
07112409441	NF	INC		11	2,336	0	128	2,464
07112409461	NF	INC		4	605	0	87	692
07112409481	NF	INC		1	151	0	17	168
07112410261	NF	INC		3	851	0	50	901
07112416241	NF	INC		2	287	0	9	296
07112416261	NF	INC		16	3,901	0	126	4,027
07112416421	NF	INC		1	189	0	6	195
07112416621	NF	INC		2	314	0	9	323
07112417281	F	INC		12	2,699	0	132	2,831
07112417881	NF	INC		22	4,400	0	277	4,677
07112418281	F	INC		6	1,264	0	58	1,322
07112418641	F	INC		8	1,780	0	55	1,835
07112419151	F	INC		19	4,720	0	150	4,870
07112419261	NF	INC		7	1,854	0	124	1,978
07112419471	NF	INC		36	8,742	0	675	9,417
07112419841	NF	INC		47	11,559	0	603	12,162
07112419861	NF	INC		5	959	0	29	988
07112419881	NF	INC		5	1,263	0	52	1,315
07112420421	F	INC		1	240	0	42	282
07112420681	NF	INC		4	681	0	22	703
07112420841	NF	INC		3	658	0	24	682
07112421241	NF	INC		22	5,473	0	187	5,660
07112421441	NF	INC		4	1,041	0	37	1,078
07112421461	NF	INC		7	1,859	0	63	1,922
07112421481	NF	INC		7	1,153	0	44	1,197

Alberta-Pacific Deciduous First Entry Block Listing (Cont.)

(Values Affected by Rounding)

Source Id	Harvest Season	Conif Charge	Detail Plan	Area (ha)	Decid (m3)	Conif (m3)	Inc Conif (m3)	Total (m3)
07112428261	NF	INC		9	2,173	0	107	2,280
07112429461	NF	INC		39	9,739	0	336	10,075
07112429661	NF	INC		1	88	0	31	119
07112430421	NF	INC		65	15,464	0	1,534	16,998
07112430681	NF	INC		22	5,196	0	792	5,988
07112430881	NF	INC		5	1,304	0	179	1,483
07112431481	NF	INC		40	9,202	0	812	10,014
07112431861	NF	INC		16	3,861	0	423	4,284
07112432241	NF	INC		8	2,127	0	245	2,372
Total				484	113,584	0	7,663	121,247

Alberta-Pacific Second Entry Block Listing

(Values Affected by Rounding)

Source Id	Harvest Season	Conif Charge	Detail Plan	Area (ha)	Decid (m3)	Conif (m3)	Inc Conif (m3)	Total (m3)
07112428342	F	INC		2	373	0	41	414
07112428472	F	INC		2	673	0	21	694
07112432822	F	INC		19	3,654	0	112	3,766
07112433412	F	INC		4	1,006	0	31	1,037
Total				28	5,706	0	205	5,911

4. Access and Road Information

Landuse agreements will be in place prior to use of any third party dispositions being used.

Planning Unit Temporary Road Information

Existing access has been utilized where possible to minimize the clearing of new Right of Way (RoW).

New access and channelled watercourse crossings will be reclaimed in order to restrict access. All terrain vehicle (ATV) access may be left to facilitate silviculture activities.

New access and channelled watercourse crossings will be reclaimed as per Section 11.3.4 of the 2012 Northeast Alberta Operating Ground Rules (OGRs). Road reclamation and abandonment details are listed in the AOP when the blocks and roads are scheduled.

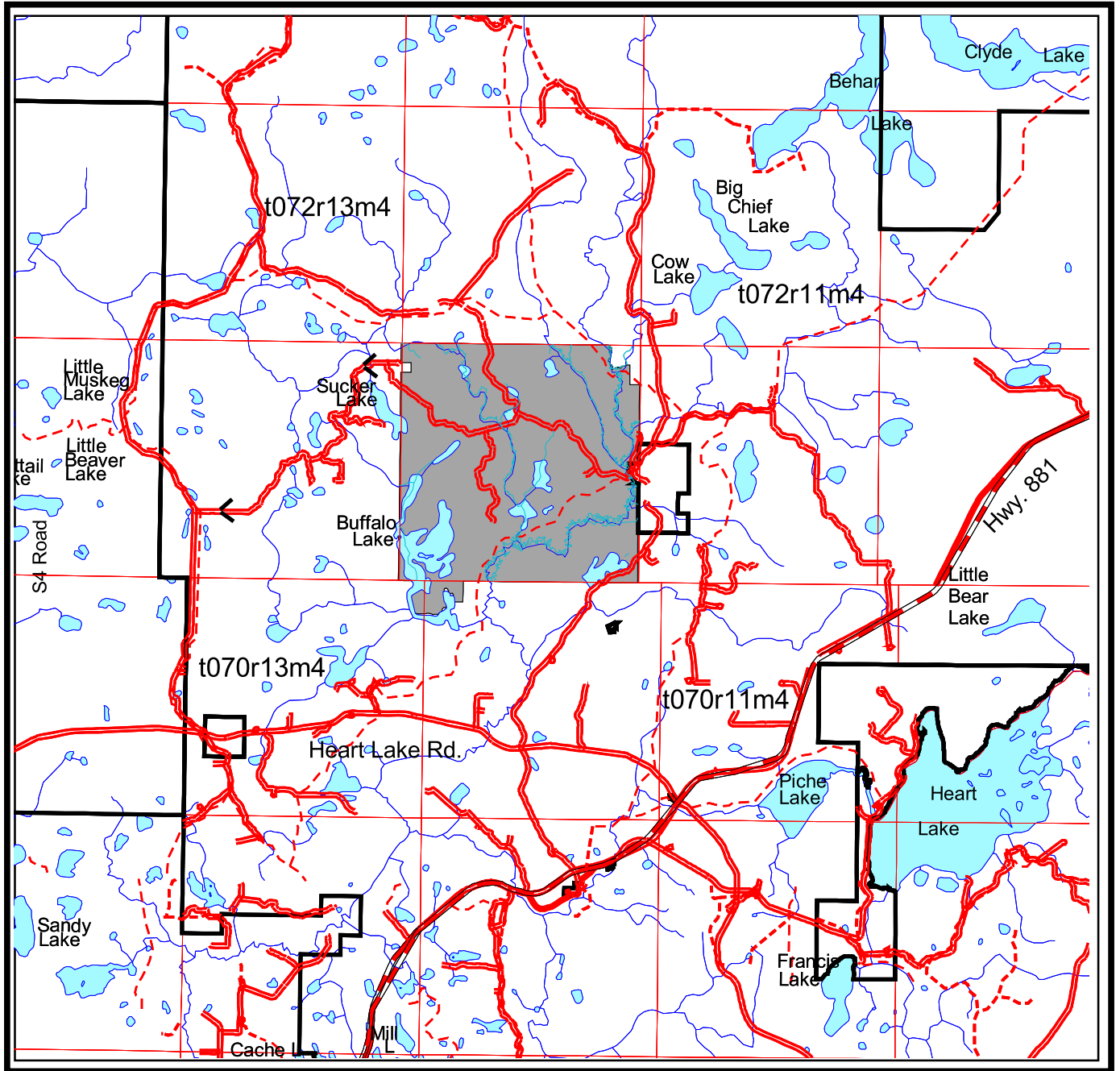
Main Access and Crossings

Road No.	Class	Length (Km)	Construction Season	Crossing Location	Field Call	Navigability
09461	4S	0.15	Non-Frozen			
10261	4S	0.96	Non-Frozen			
16421	4S	0.19	Non-Frozen			
16621	4S	0.06	Non-Frozen			
17281	4W	1.76	Frozen			
17881	4S	0.16	Non-Frozen			
18281	4W	0.25	Frozen			
18641	4W	0.19	Frozen			
19151	4W	0.92	Frozen	1879	SP	U
19261	4S	0.14	Non-Frozen			
19471	4S	1.60	Non-Frozen	1966		
19841	4S	2.24	Non-Frozen	1926 2468		
19861	4S	0.02	Non-Frozen			
20421	4W	1.43	Frozen	2065	E	U
20681	4S	0.08	Non-Frozen			
20841	4S	0.09	Non-Frozen			
21241	4S	0.64	Non-Frozen	2124		
21441	4S	0.24	Non-Frozen			
21461	4S	0.12	Non-Frozen			
28261	4S	0.63	Non-Frozen			
29461	4S	1.49	Non-Frozen			
29661	4S	0.14	Non-Frozen			
30681	4S	0.57	Non-Frozen			
30881	4S	0.62	Non-Frozen			
31481	4S	1.43	Non-Frozen			
31861	4S	0.90	Non-Frozen	3168		
32241	4S	0.95	Non-Frozen	3225	T	U
Total Class 4W:		4.55				
Total Class 4S:		13.42				
Total Class 4P:		0.00				

In the above table, possible “Field Call” channelled watercourse classifications are ephemeral (E), intermittent (I), transitional (T), small permanent (SP), large permanent (LP), lake < 4 ha (SL), lake ≥ 4 ha (LL) beaver pond (B), spring (S), saturated soils (SS) or no channelled watercourse (NW). The “Navigability” rating identifies channelled watercourse as being potentially navigable (N) or potentially unnavigable (U) based on the possibility of traveling the stream with a vessel. The “Field Call” channelled watercourse classifications in the above table are based on Table 1 of the OGRs at the time, and during the conditions, when layout was conducted.

Planning Unit 071124

Access Map



1:250000



Alberta-Pacific
Forest Industries Inc.



5. Non Timber Values

Public Involvement

Copies of this harvest plan are available for viewing at the Athabasca, Fort McMurray and Lac La Biche libraries, TimberNorth-Athabasca, the Alberta-Pacific Wabasca field office and the Alberta-Pacific mill site.

The Public Involvement for this plan was completed during the previous year's General Development Plan (GDP) review meetings.

No concerns have been identified through the public involvement process to date.

Aboriginal Consultation

The Aboriginal Consultation for this plan was completed during the previous year's GDP review meetings.

No concerns have been identified through the Aboriginal Consultation process to date.

Trappers

The holders of the following Registered Fur Management Areas (RFMA) have been contacted regarding harvesting activities within Planning Unit 071124:

- 1305
- 1596
- 1866
- 2007
- 2252
- 2639

No concerns have been identified through the Trapper Consultation process to date.

Guides and Outfitters

The holders of the following permits within Wildlife Management Unit (WMU) 515 have been notified of Alberta-Pacific's harvest plans within Planning Unit 071124:

- 0431
- 0446
- 0447
- 0493
- 0541
- 0960

No concerns have been identified through the Guide and Outfitter Consultation process to date.

Forest Recreation Groups

There are currently no active forest recreation groups with interests within this planning unit.

Grazing Lease Operators

There are currently no grazing leases within this planning unit.

Historical Resources

No known historical resource sites are located within this unit. Lands on which historical resource sites are likely to occur will be checked prior to commencement of operations or post harvest.

Forest Aesthetics

There are no forest aesthetics concerns within this planning unit.

Land Use

A review of Albert-Pacific's current land use files based on LSAS information, does not indicate land use restrictions on harvesting timber for this unit that have not already been addressed. Blocks and roads have been forwarded to a land use consultant to complete a land use search and any required contacts or changes to the harvest design will be addressed prior to harvest activities occurring.

Wildlife

This planning unit is within a key Wildlife and Biodiversity Zone and near a Caribou Range. Operations will adhere to the Alberta-Pacific wildlife plan submitted annually in the fall.

No areas of concentrated terrestrial lichens were identified during layout.

All known sensitive sites have been addressed as per 7.7.6.2 of the OGRs.

All known sensitive wildlife sites have been buffered according to section 7.7.6.2 of the OGRs.

Access and Access Management

Existing access has been utilized where possible to minimize the clearing of new RoW.

Continuous flow roads have been utilized in larger blocks to reduce skidding distances and cycle times. Their use outside of blocks has been minimized to control access and reduce potential wildlife disturbance.

The following policy has been implemented to mitigate access management concerns:

- Temporary road systems will be “signed” as temporary and closed as soon as possible after the harvesting, hauling, and silviculture activities have been completed.

The following access control practices will also be implemented:

- Road systems will be signed as “Temporary Access - Logging in Progress.”
- If a significant delay occurs between harvesting and hauling, temporary access controls on roads will be utilized to prevent access by motorized vehicles. These controls may include the placement of logs on the road, snow berms, and/or removal of creek crossings
- Slash rollback at strategic points (such as at the ends of the block or at the junction of the temporary road and permanent road) will be completed as soon as possible after logging to discourage access by all terrain or four wheel drive vehicles.

Since a portion of this planning unit falls within a key Wildlife and Biodiversity Zone, harvest and haul activities within in the zone are to be completed by January 15th as per the AOP.

6. Integration with Affected Forest Companies

Millar Western Forest Products Ltd., Ed Bobocel Lumber (1993) Ltd. and Alberta Forest Industries Ltd. have signed off on this plan on May 21, 2014 regarding this plan.

Quota Block Listing (Values Affected by Rounding)

Block Id	Harvest Season	Conif Charge	Detail Plan	Area (ha)	Decid (m3)	Conif (m3)	Inc Conif (m3)	Total (m3)
01424		CTL		3	95	381	0	476
01484		CTL		3	14	426	0	440
01684		CTL		1	8	73	0	81
01864		CTL		4	19	640	0	659
02224		CTL		3	14	456	0	470
02424		CTL		18	114	2,704	0	2,818
02624		CTL		4	18	579	0	597
02644		CTL		0	2	27	0	29
04224		CTL		2	4	132	0	136
07444		CTL		2	16	196	0	212
07664		CTL		5	25	384	0	409
07684		CTL		3	8	264	0	272
07884		CTL		10	27	885	0	912
08464		CTL		14	472	1,874	0	2,346
08644		CTL		2	44	126	0	170
08664		CTL		6	119	467	0	586
08684		CTL		2	22	140	0	162
08884		CTL		14	125	1,127	0	1,252
09244		CTL		0	1	28	0	29
09264		CTL		6	17	568	0	585
09444		CTL		2	14	266	0	280
09624		CTL		21	112	2,820	0	2,932
09824		CTL		1	1	57	0	58
09844		CTL		1	7	215	0	222
12244		CTL		12	74	1,839	0	1,913
12424		CTL		31	162	4,666	0	4,828
12444		CTL		2	15	313	0	328
12844		CTL		2	5	176	0	181
13884		CTL		1	2	33	0	35
16264		CTL		2	129	302	0	431
16284		CTL		2	5	154	0	159
16624		CTL		1	2	75	0	77
17244		CTL		4	10	314	0	324
17444		CTL		18	148	1,336	0	1,484

Quota Block Listing (Cont.)

(Values Affected by Rounding)

Block Id	Harvest Season	Conif Charge	Detail Plan	Area (ha)	Decid (m3)	Conif (m3)	Inc Conif (m3)	Total (m3)
17464		CTL		0	2	68	0	70
17484		CTL		13	174	2,015	0	2,189
17624		CTL		1	5	44	0	49
17684		CTL		6	28	930	0	958
17824		CTL		5	125	470	0	595
17844		CTL		4	33	308	0	341
17864		CTL		3	44	203	0	247
18484		CTL		4	321	268	48	637
18624		CTL		3	7	224	0	231
18684		CTL		2	4	156	0	160
18844		CTL		12	33	1,057	0	1,090
18864		CTL		0	1	25	0	26
18884		CTL		2	20	216	0	236
19224		CTL		2	121	480	0	601
19244		CTL		1	63	223	0	286
19264		CTL		1	79	185	0	264
19464		CTL		1	30	120	0	150
19664		CTL		2	104	420	0	524
19864		CTL		2	260	390	0	650
20224		CTL		3	71	480	0	551
20244		CTL		0	23	55	0	78
20424		CTL		1	3	92	0	95
20644		CTL		1	96	61	0	157
20664		CTL		10	208	1,036	0	1,244
20684		CTL		0	11	42	0	53
20824		CTL		2	11	364	0	375
20864		CTL		6	50	456	0	506
21224		CTL		12	242	1,700	0	1,942
21284		CTL		10	80	744	0	824
21484		CTL		7	76	528	0	604
21664		CTL		12	115	1,126	0	1,241
21684		CTL		4	53	468	0	521
21844		CTL		0	1	44	0	45
24684		CTL		1	11	95	0	106
24824		CTL		2	17	305	0	322
24844		CTL		2	8	178	0	186
24884		CTL		7	36	1,158	0	1,194
25624		CTL		1	12	112	0	124
25644		CTL		12	30	976	0	1,006

Quota Block Listing (Cont.)

(Values Affected by Rounding)

Block Id	Harvest Season	Conif Charge	Detail Plan	Area (ha)	Decid (m3)	Conif (m3)	Inc Conif (m3)	Total (m3)
25664		CTL		0	1	20	0	21
25684		CTL		16	402	1,822	0	2,224
25824		CTL		2	17	147	0	164
25844		CTL		31	95	2,751	0	2,846
25864		CTL		2	5	163	0	168
25884		CTL		0	0	11	0	11
28224		CTL		4	9	317	0	326
28244		CTL		5	45	683	0	728
28424		CTL		1	4	123	0	127
28444		CTL		1	2	74	0	76
29264		CTL		35	4,102	6,291	0	10,393
29284		CTL		3	336	502	0	838
29644		CTL		2	230	98	0	328
29824		CTL		1	144	46	15	205
29844		CTL		8	112	911	0	1,023
30424		CTL		4	172	312	0	484
30444		CTL		12	1,726	1,159	31	2,916
30624		CTL		1	93	172	0	265
30644		CTL		2	181	312	0	493
30844		CTL		4	385	898	0	1,283
30864		CTL		0	45	68	0	113
31284		CTL		2	30	272	0	302
31424		CTL		1	8	247	0	255
31444		CTL		15	1,724	2,587	0	4,311
31624		CTL		1	69	103	0	172
31644		CTL		2	237	341	0	578
31684		CTL		2	39	317	0	356
31824		CTL		1	65	353	0	418
31884		CTL		1	36	395	0	431
32244		CTL		2	174	260	0	434
32284		CTL		6	286	768	0	1,054
32444		CTL		10	746	2,423	0	3,169
34264		CTL		2	240	359	0	599
36624		CTL		1	1	40	0	41
Total				536	16,219	67,210	94	83,523

7. Spatial Harvest Sequence Summary

The table below summarizes the variance (in area) from the SHS, for Alberta-Pacific harvesting. The variance exceeds the 20% allowable for acceptance under the OGRs. The primary cause for the variance is inoperable deciduous scattered within coniferous landbase. Effort has been made to minimize variance wherever feasible.

SHS Tracking					
SHS Tracking	Decid. Cover Type	Sw Cover Type	Sb Cover Type	Pj Cover Type	Total Cover Type
Total SHS in Planning Unit	780.0	0.0	0.0	0.0	780.0
FHP SHS Harvest ha.	358.2	0.0	0.0	0.0	358.2
Deleted SHS ha. (reportable)	129.4	0.0	0.0	0.0	129.4
Deferred SHS ha. (reportable)	9.6	0.0	0.0	0.0	9.6
Variance % ⁽¹⁾ (reportable)	28.0	0.0	0.0	0.0	28.0
Addition ha.	0	0.0	0.0	0.0	0
Bypassed ha.	112.9	0.0	0.0	0.0	112.9
Total Harvest ha. ⁽²⁾	358.2	0.0	0.0	0.0	358.2

(1) Variance % is the Deleted and Deferred SHS ha. expressed as a percentage of the FHP SHS Harvest, the Deleted and Deferred SHS ha.

(2) Total Harvest ha. is the sum of FHP SHS Harvest ha. and Additions ha.

The bypassed deciduous stands in the north west portion of the Planning Unit will be scheduled once the surrounding merchantable coniferous stands are scheduled by the Quota holders.

8. Silviculture Information

The following table outlines the initial silviculture declarations for FHP blocks within Planning Unit 071124. Cover group balanced declarations will be submitted post harvest.

Alberta-Pacific Silviculture Declarations

Source Id	Area (ha)	Std_ Mod	Open_ Desig	Species_ Gr	Silv_ Harv
07112409221	9.5	D	CC	DE	CC
07112409281	16.6	D	CC	DE	CC
07112409441	10.7	D	CC	DE	CC
07112409461	3.8	D	CC	DE	CC
07112409481	1.1	D	CC	DE	CC
07112410261	3.3	D	CC	DE	CC
07112416241	1.6	D	CC	DE	CC
07112416261	15.6	D	CC	DE	CC
07112416421	1.0	D	CC	DE	CC
07112416621	1.9	D	CC	DE	CC

Alberta-Pacific Silviculture Declarations (Cont.)

Source Id	Area (ha)	Std_ Mod	Open_ Desig	Species_ Gr	Silv_ Harv
07112417281	11.6	D	CC	DE	CC
07112417881	21.6	D	CC	DE	CC
07112418281	5.5	D	CC	DE	CC
07112418641	7.7	D	CC	DE	CC
07112419151	19.5	D	CC	DE	CC
07112419261	7.4	D	CC	DE	CC
07112419471	36.4	D	CC	DE	CC
07112419841	46.6	D	CC	DE	CC
07112419861	5.5	D	CC	DE	CC
07112419881	4.9	D	CC	DE	CC
07112420421	1.2	D	CC	DE	CC
07112420681	3.9	D	CC	DE	CC
07112420841	2.9	D	CC	DE	CC
07112421241	22.1	D	CC	DE	CC
07112421441	4.5	D	CC	DE	CC
07112421461	7.5	D	CC	DE	CC
07112421481	6.6	D	CC	DE	CC
07112428261	8.6	D	CC	DE	CC
07112429461	39.4	D	CC	DE	CC
07112429661	0.5	D	CC	DE	CC
07112430421	64.6	D	CC	DE	CC
07112430681	21.6	D	CC	DE	CC
07112430881	5.1	D	CC	DE	CC
07112431481	39.7	D	CC	DE	CC
07112431861	16.2	D	CC	DE	CC
07112432241	7.8	D	CC	DE	CC

In the above table, the codes for “Std_Mod”, “Open_Type”, “Species_Gr” and “Silv_Harv” are as per the Alberta Regeneration Information System (ARIS) domain codes. “AV” under “Open_Desig” is not an ARIS code but is used internally for the tracking of understorey avoidance blocks. If a block contains adequate amounts of Balsam Fir, so that fir is an acceptable coniferous regeneration species, a code of FA is used in the “Species_Gr”.

All deciduous blocks will be Leave for Natural (LFN). All coniferous blocks will be treated as per Appendix 4, of the Forest Management Plan (FMP).

9. OGRs Variances

Blocks

All blocks are outside a community FireSmart Zone. The piling of debris will be used as a method of slash abatement within these blocks.

SHS Tracking

SHS Tracking	Decid. Cover Type	Sw Cover Type	Sb Cover Type	Pj Cover Type	Total Cover Type
Total SHS in Planning Unit	780.0	0.0	0.0	0.0	780.0
FHP SHS Harvest ha.	358.2	0.0	0.0	0.0	358.2
Deleted SHS ha. (reportable)	129.4	0.0	0.0	0.0	129.4
Deferred SHS ha. (reportable)	9.6	0.0	0.0	0.0	9.6
Variance % ⁽¹⁾ (reportable)	28.0	0.0	0.0	0.0	28.0
Addition ha.	0	0.0	0.0	0.0	0
Bypassed ha.	112.9	0.0	0.0	0.0	112.9
Total Harvest ha. ⁽²⁾	358.2	0.0	0.0	0.0	358.2

(1) Variance % is the Deleted and Deferred SHS ha. expressed as a percentage of the FHP SHS Harvest, the Deleted and Deferred SHS ha.

(2) Total Harvest ha. is the sum of FHP SHS Harvest ha. and Additions ha.

The following table identifies blocks greater than 7.0 ha that may exceed 5 % road disturbance once turnabouts are constructed.

Road Percent

Source Id	% Road Class	Comments
07112417281	8	Narrow block and/or irregular shaped block.
07112418641	5	Narrow block and/or irregular shaped block.
07112432241	7	Extra road required; Access to other blocks.

The percent road class values have been achieved by rounding the road disturbance percent to the nearest whole number.

Roads

Road Comments

Road No.	Class	Comments
10261	4S	Will contain a spur road that may be within 200m of a Lake at grid location 1016.
18641	4W	Will contain a spur road that may be within 200m of a Lake at grid location 1853.
19151	4W	Will contain a spur road that may be within 200m of a Lake at grid location 1981.
19261	4S	Will contain a spur road that may be within 200m of a Lake at grid location 1927.
30421	4S	Will contain a spur road that may be within 200m of a Lake at grid location 3023.

Roads Close to Watercourses

Road No.	Grid Location	Base Info	Field Call	Distance of Watercourse From Road	Habitat Rating
18641	2033	LL	LL	200	U
19841	2487	LL	LL	200	U
32241	3225	SL	SL	200	U

The “Distance of Watercourse From Road” is the minimum distance allowed in Table 2 of the OGRs without ESRD approval. The roads listed are within those minimum distances. Please refer to the FHP map and layout block maps for more information.

In the above table, possible “Base Info” watercourse classifications are indefinite (E), intermittent (I), perennial (P), unmapped (UM)), lake < 4 ha (SL) or lake ≥ 4 ha (LL). The possible “Field Call” watercourse classifications are intermittent (I), transitional (T), small permanent (SP), large permanent (LP), lake < 4 ha (SL), lake ≥ 4 ha (LL). The “Habitat Rating” identifies watercourses surveyed as fish bearing or potentially fish bearing (SF), surveyed as non-fish bearing (SN) or unsurveyed (U). The “Field Call” watercourse classifications in the above table are based on Table 1 of the OGRs at the time, and during the conditions, when layout was conducted.