

Planning Unit 068254 Forest Harvest Plan

1. Introduction

This Forest Harvest Plan (FHP) for Planning Unit 068254 includes maps and reports that clearly show and document the planned harvest area boundaries, roads and water crossings within the planning unit.

This plan is being submitted for appraisal, for a 5-year FHP approval under the 2015-2016 Alberta-Pacific Forest Industries Inc. (Alberta-Pacific) Annual Operating Plan (AOP).

2. Planning Unit Specific Comments

Planning Unit 068254 is located northwest of Athabasca.

The planning unit is located in Forest Management Unit (FMU) S23. Alberta-Pacific has rights to D and D(C) as deciduous landbase.

The Community Timber Permit Program (CTPP) and Ed Bobocel Lumber (1993) Ltd. have been allocated portions of the coniferous Annual Allowable Cut (AAC) from the DC, C and CD cover groups. The coniferous stands have been placed into first entry CTPP blocks.

The harvest design utilizes the 2006 Spatial Harvest Sequence (SHS). The plan and SHS were designed to remove second pass timber within the area. The affected coniferous operator has reviewed and agreed to the deciduous design.

Integration

This FHP is in FMU S23 and has been provided for review to the following forest operators:

Ed Bobocel Lumber (1993) Ltd.

Alberta-Pacific has received their agreement for this plan on October 28, 2015.

Watershed

No channelled watercourses or waterbodies within this planning unit have been surveyed as fish bearing or navigable.

All unsurveyed channeled creeks have been buffered and crossed as though they were fish bearing.

Stand Structure

An average of 5% of the merchantable volume will be left in stand structure over the FMU. The structure will be left as laidout patches, and as single trees and small clumps of timber at the operators' discretion.

Debris Management

One or more of the following debris management strategies apply for blocks within this planning unit:

- Methods described in the Forest and Prairie Protection Act and Regulations, and/or
- Thinly spread slash throughout the block, and/or
- Stump side processing.

Blocks within FireSmart Community Zones will not utilize the retention of debris piles.

In areas outside of FireSmart Community Zones the retention of debris piles can be used as an acceptable debris management strategy as per Appendix 2 of the 2014 Northeast Alberta Operating Ground Rules (OGRs). Alberta-Pacific will not utilize the retention of debris piles for block outside of the FireSmart Zone within this planning unit.

The deciduous utilization standard will be 15/10. The coniferous utilization standard will be 15/11.

Design Comments

During the layout phase of this operation, Alberta-Pacific looked for signs of insect or disease infestations. There was no sign of insect or disease at time of layout.

3. Block Information

The following table summarizes the volumes within Alberta-Pacific's FHP blocks.

Landbase Volume Summary

Company	Area (ha)	Decid (m3)	Conif (m3)	Inc Conif (m3)	Total (m3)
Alberta-Pacific	830	178,230	99	16,087	194,416

Block 06825433331 will have its coniferous volume hauled as quota (CTL) S23 chargeable.

Alberta-Pacific Deciduous First Entry Block Listing

(Values Affected by Rounding)

Source Id	Harvest Season	Conif Charge	Detail Plan	Area (ha)	Decid (m3)	Conif (m3)	Inc Conif (m3)	Total (m3)
06825401241	F	INC		9	2,024	0	78	2,102
06825401471	F	INC		20	4,604	0	838	5,442
06825401711	F	INC		17	3,935	0	550	4,485
06825401971	NF	INC		20	4,591	0	500	5,091
06825402391	F	INC		43	9,845	0	332	10,177
06825402841	F	INC		4	861	0	146	1,007
06825402891	F	INC		1	181	0	51	232
06825404551	F	INC	U	231	51,253	0	4,632	55,885
06825410191	F	INC		99	22,791	0	883	23,674
06825410771	F	INC		4	703	0	145	848
06825411461	F	INC		5	957	0	240	1,197
06825412411	NF	INC		3	674	0	96	770
06825412711	NF	INC		49	11,798	0	651	12,449
06825412861	NF	INC		9	2,331	0	180	2,511
06825414211	F	INC		12	1,822	0	203	2,025
06825414491	NF	INC		8	1,935	0	104	2,039
06825414571	NF	INC		3	644	0	212	856
06825415291	NF	INC	U	19	4,187	0	475	4,662
06825415631	F	INC		4	913	0	123	1,036
06825415691	NF	INC		1	309	0	39	348
06825416371	F	INC		5	1,189	0	45	1,234
06825416481	NF	INC	U	20	4,540	0	630	5,170
06825422841	NF	INC		7	1,313	0	150	1,463
06825423111	NF	INC		2	494	0	61	555
06825423641	F	INC		1	169	0	24	193

**Alberta-Pacific Deciduous First Entry Block Listing
(Cont.)**

(Values Affected by Rounding)

Source Id	Harvest Season	Conif Charge	Detail Plan	Area (ha)	Decid (m3)	Conif (m3)	Inc Conif (m3)	Total (m3)
06825423671	F	INC		5	1,175	0	54	1,229
06825426231	F	INC		11	2,471	0	294	2,765
06825426311	F	INC		9	1,465	0	202	1,667
06825426421	F	INC		2	342	0	21	363
06825426651	F	INC		4	814	0	102	916
06825428291	F	INC		17	2,324	0	581	2,905
06825428331	F	INC		1	194	0	68	262
06825428521	NF	INC		30	7,093	0	255	7,348
06825428561	F	INC		9	1,707	0	569	2,276
06825428691	F	INC		39	7,360	0	847	8,207
06825428731	NF	INC		41	9,674	0	311	9,985
06825428891	F	INC		3	451	0	23	474
06825429841	F	INC		5	731	0	240	971
06825433331	F	CTL		3	392	0	99	491
06825434331	F	INC		28	4,561	0	161	4,722
06825434591	F	INC		9	1,017	0	309	1,326
06825435281	F	INC	U	5	596	0	133	729
06825435481	F	INC	U	10	1,317	99	333	1,749
06925402221	F	INC		3	379	0	86	465
06925403841	F	INC		1	107	0	11	118
Total				830	178,230	99	16,087	194,416

The blocks in the above table with a CTL for Conif Charge will be considered White Spruce cover type for coniferous volume chargability.

The blocks in gray on the FHP maps were harvested in 2006 and are shown on the map for reference only.

Access and Road Information

Landuse agreements will be in place prior to use of any third party dispositions being used.

Main Access to Planning Unit

Township	Crossing Location	Field Call
68-24-4	0713	I
	0714	I
	0723	E
	0733	I
	0763	T
	0784	I

Planning Unit Temporary Road Information

Existing access has been utilized where possible to minimize the clearing of new Right of Way (RoW).

New access and channelled watercourse crossings will be reclaimed in order to restrict access. All terrain vehicle (ATV) access may be left to facilitate silviculture activities.

New access and channelled watercourse crossings will be reclaimed as per Section 11.3.4 of the OGRs. Road reclamation and abandonment details are listed in the AOP when the blocks and roads are scheduled.

Main Access and Crossings

Road No.	Class	Length (Km)	Construction Season	Crossing Location	Field Call	Navigability
01241	4W	0.29	Frozen			
01471	4W	1.52	Frozen	0126	E	N
				0296	SP	N
01711	4W	0.39	Frozen			
01971	4S	0.02	Non-Frozen			
02221	4W	0.52	Frozen			
02391	4W	3.32	Frozen	0266	E	N
				0276	E	N
				1084	I	N
				1087	E	N
02841	4W	0.07	Frozen			
02891	4W	0.21	Frozen	0288	E	N
03841	4W	0.17	Frozen			
04551	4W	6.18	Frozen	0462	E	U
	ST	0.02		0469	E	U
				0497	T	U
				0955	E	U
10191	4W	4.21	Frozen	0999	E	U
				1079	E	U
10771	4W	0.96	Frozen			

Main Access and Crossings (Cont.)

Road No.	Class	Length (Km)	Construction Season	Crossing Location	Field Call	Navigability
11461	4W	0.41	Frozen	1137 1148	E E	N N
12411	4W	0.26	Frozen			
12711	4S	1.88	Non-Frozen	0176	SP	N
	4W	0.76	Frozen	1233	I	U
	ST	0.05		1244	SP	U
				1262	E	N
				1264	E	N
12861	4S	0.97	Non-Frozen	1265	E	N
				1296	I	U
14211	4S	1.82	Non-Frozen	1286	E	U
	4W	1.27	Frozen			
14491	4S	0.84	Non-Frozen			
14571	4S	1.63	Non-Frozen	1226	I	U
				1236	E	U
				1256	I	U
				1473	E	U
15291	4S	1.6	Non-Frozen			
15631	4W	0.48	Frozen			
15691	4S	0.71	Non-Frozen			
16371	4W	0.14	Frozen			
16481	4S	1.83	Non-Frozen	1669	SP	U
22841	4S	0.84	Non-Frozen			
23111	4S	0.82	Non-Frozen	1418	I	U
23641	4W	0.33	Frozen			
23671	4W	1.19	Frozen			
26231	4W	0.67	Frozen			
26311	4W	1.64	Frozen			
26421	4W	0.05	Frozen			
26651	4W	0.67	Frozen	2644	I	N
28291	4W	0.09	Frozen			
28331	4W	0.48	Frozen	2834	I	U
28521	4S	1.07	Non-Frozen	2861	E	N
28561	4W	0.5	Frozen			
28691	4W	2.52	Frozen	2874	SP	N
28731	4S	3.85	Non-Frozen	2198	I	U
				2218	E	N
				2893	E	N
28891	4W	0.66	Frozen	2889	E	U
				3411	E	N
29841	4W	0.57	Frozen	2994	E	U
33331	4W	0.01	Frozen			
34331	4W	0.81	Frozen			
34591	4W	1.22	Frozen	3448	I	U
35281	4W	1.47	Frozen			
35481	4W	0.31	Frozen			
Total Class 4S:		17.88				
Total Class 4W:		34.35				
Total Class ST:		0.07				

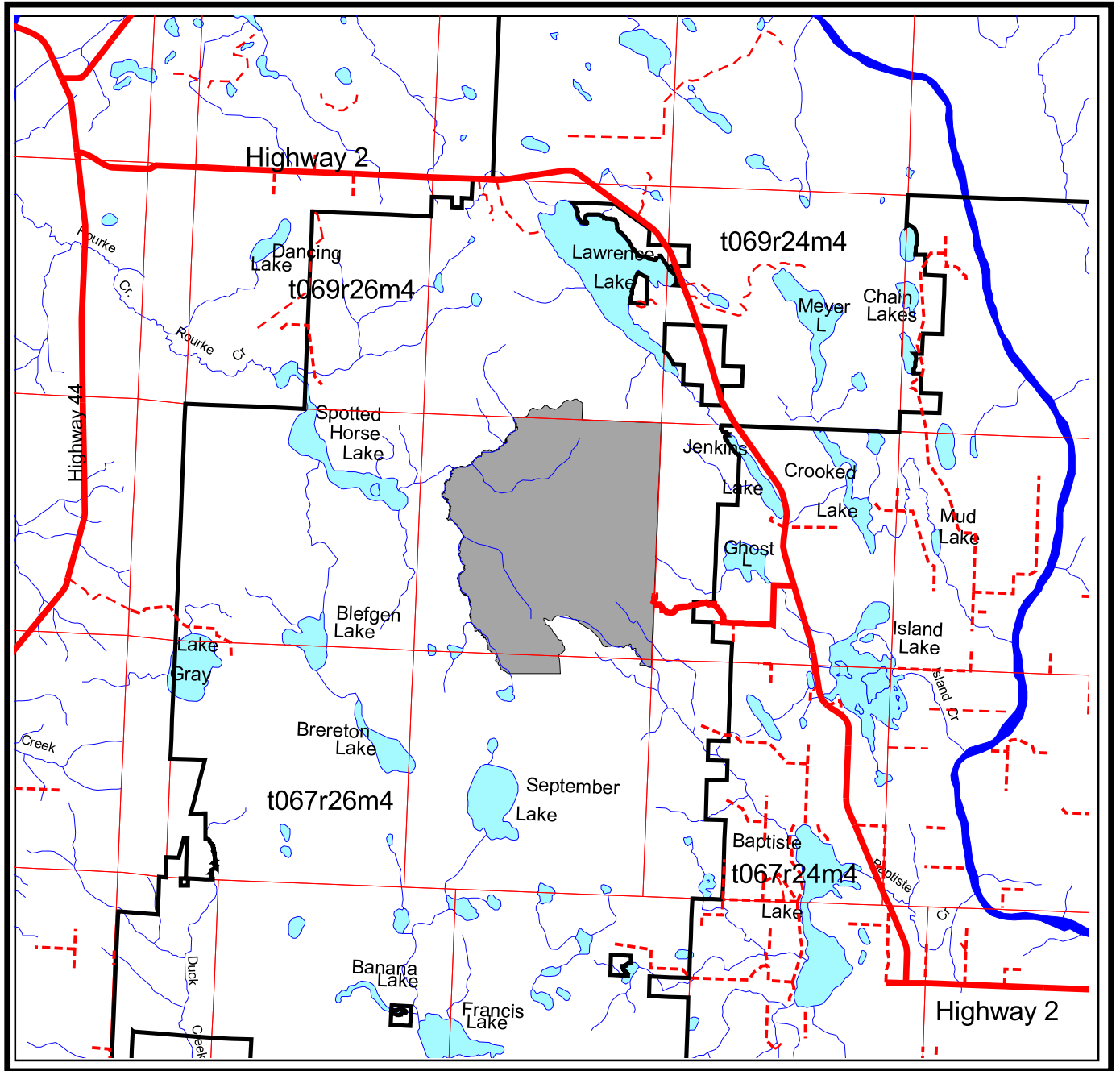
Skid Trail Crossings

Road No.	Crossing Location	Base Info	Field Call	Navigability
04551	0416	UM	E	U

In the above tables, possible “Base Info” watercourse classifications are indefinite (E), intermittent (I), perennial (P) or unmapped (UM). The possible “Field Call” channelled watercourse classifications are ephemeral (E), intermittent (I), transitional (T), small permanent (SP), large permanent (LP), lake < 4 ha (SL), lake ≥ 4 ha (LL) beaver pond (B), spring (S), saturated soils (SS) or no channelled watercourse (NW). The “Navigability” rating identifies channelled watercourse as being potentially navigable (N) or potentially unnavigable (U) based on the possibility of traveling the stream with a vessel. The “Field Call” channelled watercourse classifications in the above table are based on Table 1 of the OGRs at the time, and during the conditions, when layout was conducted. Also in the above tables Class ST is skid trail.

Planning Unit 068254

Access Map



1:250000



Alberta-Pacific
Forest Industries Inc.



5. Non Timber Values

Public Involvement

Copies of this harvest plan will be available for viewing at the Athabasca, Fort McMurray and Lac La Biche libraries, TimberNorth-Athabasca, the Alberta-Pacific Wabasca field office and the Alberta-Pacific mill site.

The Public Involvement for this plan was completed during the previous year's GDP review meetings.

No concerns have been identified through the public involvement process to date.

Aboriginal Consultation

The Aboriginal Consultation for this plan was completed during the previous year's GDP review meetings.

No concerns have been identified through the Aboriginal Consultation process to date.

Trappers

The holders of the following Registered Fur Management Areas (RFMA) have been contacted regarding harvesting activities within Planning Unit 068254:

1884	1890	2642
------	------	------

No concerns have been identified through the Trapper Consultation process to date.

Guides and Outfitters

The holders of the following permits within Wildlife Management Unit (WMU) 510 have been notified of Alberta-Pacific's harvest plans within Planning Unit 068254:

0014	0066	0163	0260	0401	0475
0480	0809	0913	0936	0995	1017
1026	1159	1203			

No concerns have been identified through the Guide and Outfitter Consultation process to date.

Groups

There are currently no active forest recreation groups with interests within this planning unit.

Historical Resources

Known historical resource sites have been found and addressed during the design of this plan.

Forest Aesthetics

No concerns have been identified.

Land Use

The following land use are dispositions within Planning Unit 068254 but do not affect the harvesting of timber.

LOC064121	LOC951880	CNT090003
LOC941845	LOC941857	PLA040863
LOC941856	PNT10888	PNT10922

The following Industrial Sample Plots (ISP) have been removed from the plan.

ISP960005	ISP950182	ISP980519
-----------	-----------	-----------

The access into Planning Unit 068254 goes through grazing lease GRL790044. There are no concerns.

Wildlife

This planning unit is not within or near Caribou Range or key Wildlife and Biodiversity Zone. Operations will adhere to the Alberta-Pacific wildlife plan submitted annually in the fall.

No areas of concentrated terrestrial lichens were identified during layout.

All known sensitive wildlife sites have been buffered according to section 7.7.6.2 of the OGRs.

The following blocks have been buffered according to section 7.1.1 of the OGR's:

06825412411	06825412711
-------------	-------------

Access and Access Management

Existing access has been utilized where possible to minimize the clearing of new RoW.

Continuous flow roads have been designed to reduce the amount of two-way traffic through certain areas of the planning unit (i.e. Road 10191).

The following policies have been implemented to mitigate access management concerns:

- Temporary road systems will be closed as soon as possible after the harvesting, hauling, and silviculture activities have been completed.

6. Spatial Harvest Sequence Summary

The table below summarizes the variance (in area) from the SHS, for Alberta-Pacific harvesting. Non-SHS area has been incorporated into this harvest design to make the area more operationally feasible and avoid a third entry into the area. To offset these additions there is 62.3 ha of deletations and 193.4 ha of deferrals from the SHS.

SHS Tracking					
SHS Tracking	Decid. Cover Type	Sw Cover Type	Sb Cover Type	Pj Cover Type	Total Cover Type
Total SHS in Planning Unit	929.6				929.6
FHP SHS Harvest ha.	743.8				743.8
Deleted SHS ha. (reportable)	62.3				62.3
Deferred SHS ha. (reportable)	193.4				193.4
Variance % ⁽¹⁾ (reportable)	27.5%				27.5%
Addition ha.	250.1				250.1
Bypassed ha.	0.0				0.0
Total Harvest ha. ⁽²⁾	993.9				993.9

(1) Variance % is the Deleted and Deferred SHS ha. expressed as a percentage of the Total SHS in the Planning Unit.

(2) Total Harvest ha. is the sum of FHP SHS Harvest ha. and Additions ha.

7. Silviculture Information

The following table outlines the initial silviculture declarations for FHP blocks within Planning Unit 068254. Cover group balanced declarations will be submitted post harvest.

Alberta-Pacific Silviculture Declarations

Source Id	Area (ha)	Std_ Mod	Open_ Desig	Species_ Gr	Silv_ Harv
06825401241	8.8	D	CC	DE	CC
06825401471	20.1	D	CC	DE	CC
06825401711	17.1	D	CC	DE	CC
06825401971	20.3	D	CC	DE	CC
06825402391	42.7	D	CC	DE	CC
06825402841	4.0	D	CC	DE	CC
06825402891	1.4	D	CC	DE	CC
06825404551	231.4	D	PC	DE	UP
06825410191	98.8	D	CC	DE	CC
06825410771	3.7	D	CC	DE	CC
06825411461	4.6	D	CC	DE	CC
06825412411	2.8	D	CC	DE	CC
06825412711	49.1	D	CC	DE	CC
06825412861	9.2	D	CC	DE	CC
06825414211	11.6	D	CC	DE	CC
06825414491	8.3	D	CC	DE	CC
06825414571	3.4	D	CC	DE	CC
06825415291	18.7	D	PC	DE	UP
06825415631	3.8	D	CC	DE	CC
06825415691	1.4	D	CC	DE	CC
06825416371	4.6	D	CC	DE	CC
06825416481	19.7	D	PC	DE	UP
06825422841	6.6	D	CC	DE	CC
06825423111	2.2	D	CC	DE	CC
06825423641	1.0	D	CC	DE	CC
06825423671	4.6	D	CC	DE	CC
06825426231	11.3	D	CC	DE	CC
06825426311	8.9	D	CC	DE	CC
06825426421	1.6	D	CC	DE	CC
06825426651	3.8	D	CC	DE	CC
06825428291	16.7	D	CC	DE	CC
06825428331	1.1	D	CC	DE	CC
06825428521	30.0	D	CC	DE	CC
06825428561	8.8	D	CC	DE	CC
06825428691	39.4	D	CC	DE	CC
06825428731	40.8	D	CC	DE	CC

Alberta-Pacific Silviculture Declarations (Cont.)

Source Id	Area (ha)	Std_ Mod	Open_ Desig	Species_ Gr	Silv_ Harv
06825428891	3.4	D	CC	DE	CC
06825429841	5.5	D	CC	DE	CC
06825433331	2.7	D	CC	DE	CC
06825434331	28.1	D	CC	DE	CC
06825434591	8.8	D	CC	DE	CC
06825435281	5.0	D	PC	DE	UP
06825435481	10.0	D	PC	DE	UP
06925402221	3.1	D	CC	DE	CC
06925403841	0.7	D	CC	DE	CC

In the above table, the codes for “Std_Mod”, “Open_Type”, “Species_Gr” and “Silv_Harv” are as per the Alberta Regeneration Information System (ARIS) domain codes. “AV” under “Open_Desig” is not an ARIS code but is used internally for the tracking of understorey avoidance blocks. If a block contains adequate amounts of Balsam Fir, so that fir is an acceptable coniferous regeneration species, a code of FA is used in the “Species_Gr”.

All deciduous blocks will be Leave for Natural (LFN).

8. OGRs Variances

Blocks

The lakes bordering Blocks 06825404551, 06825416371, and 06825428731 are less than 4.0 hectares in size and a 30 metre buffer was utilized.

The following table identifies blocks greater than 7.0 ha that may exceed 5% road disturbance once turnabouts are constructed.

Road Percent

Source Id	% Road Class	Comments
06825401241	6	Narrow block and irregular shaped block.
06825401711	5	Narrow block and irregular shaped block.
06825401971	5	Narrow block and irregular shaped block.
06825414211	6	Extra road required; Access to other blocks.
06825415291	5	Extra road required for detailed block plan.
06825426231	8	Extra road required; Access to other blocks.
06825426311	5	Extra road required; Access to other blocks.
06825434331	5	Irregular shaped portions of block.

The percent road class values have been achieved by rounding the road disturbance percent to the nearest whole number.

Roads

Road Comments

Road No.	Class	Comments
10771	4W	This road is within 30m of a unmapped intermittent creek.
12711	4S	This road is within 30m of a intermittent (1233) and small permanent
14491	4S	This road is within 200m of a small lake.
16481	4S	This road is within 30m of a perennial creek.
28331	4W	This road is within 200m of a small lake.
28691	4W	This road is within 200m of a small lake.
34591	4W	This road is within 30m of a unmapped intermittent creek.

Roads Close to Watercourses

Road No.	Grid Location	Base Info	Field Call	Distance of Watercourse From Road	Habitat Rating
10771	1087	UM	I	30	U
12711	1244	P	SP	30	U
12711	1233	I	I	30	U
14491	1438	SL	SL	200	U
16481	1679	P	SP	30	U
28331	2833	SL	SL	200	U
28691	2874	SL	SL	200	U
28731	2894	SL	SL	200	U
34591	3448	I	I	30	U

The “Distance of Watercourse From Road” is the minimum distance allowed in Table 2 of the OGRs without ESRD approval. The roads listed are within those minimum distances. Please refer to the FHP map and layout block maps for more information.

In the above table, possible “Base Info” watercourse classifications are indefinite (E), intermittent (I), perennial (P), unmapped (UM) , lake < 4 ha (SL) or lake ≥ 4 ha (LL). The possible “Field Call” watercourse classifications are intermittent (I), transitional (T), small permanent (SP), large permanent (LP), lake < 4 ha (SL), lake ≥ 4 ha (LL). The “Habitat Rating” identifies watercourses surveyed as fish bearing or potentially fish bearing (SF), surveyed as non-fish bearing (SN) or unsurveyed (U). The “Field Call” watercourse classifications in the above table are based on Table 1 of the OGRs at the time, and during the conditions, when layout was conducted.